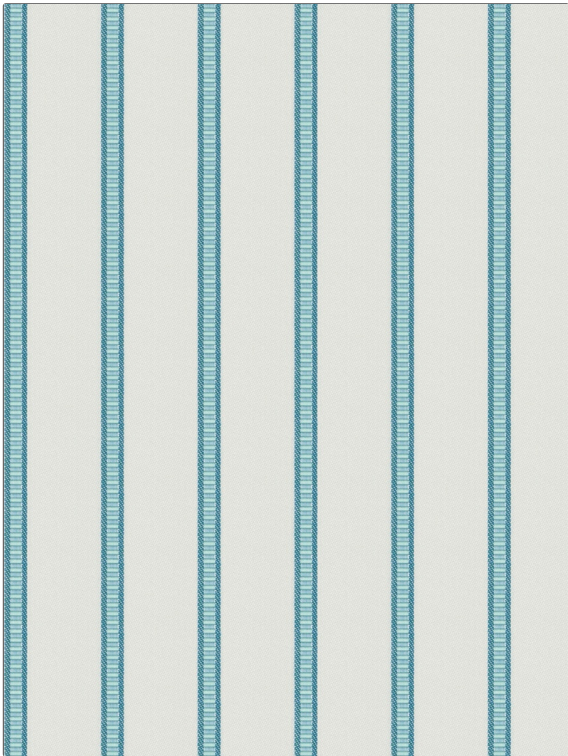


**PATTERN** Pier Stripe  
**COLOR** Surf

|                                |                                |
|--------------------------------|--------------------------------|
| <b>BRAND</b>                   | <b>APPLICATION</b>             |
| Fabricut                       | Fabric                         |
| <b>USES</b>                    | <b>CATEGORIES</b>              |
| Upholstery                     | Wovens, Sunbrella              |
| <b>COLORS</b>                  | <b>DESIGN TYPES</b>            |
| Aqua / Teal, Off White / Ivory | Stripes, Contemporary / Modern |
| <b>SCALE</b>                   | <b>RAILROADED</b>              |
| Small                          | Railroaded                     |



|                        |                               |                         |   |
|------------------------|-------------------------------|-------------------------|---|
| <b>WIDTH</b>           | <b>FINISH</b>                 | <b>VERTICAL REPEAT</b>  | <b>HORIZONTAL REPEAT</b>                      |
| 54.00 in (137.16 cm)   | Soil & Stain Repellent Finish | 0.13 in (0.33 cm)       | 4.63 in (11.76 cm)                            |
| <b>CONTENT</b>         | <b>BACKING</b>                | <b>FIRE CODES</b>       | <b>DOUBLE RUBS</b>                            |
| 100% Sunbrella Acrylic |                               | UFAC Class I / NFPA 260 | Exceeds 12,000 Double Rubs (Wyzenbeek Method) |
| <b>PRODUCT NUMBER</b>  | <b>COUNTRY</b>                | <b>CLEANING CODES</b>   |   |
| 6672204                | USA                           | WS                      |   |

**ADDITIONAL PRODUCT NOTES**

Soil & Stain Repellent Finish, Sunbrella, Mildew Resistant, Indoor / Outdoor, 2,200 Hours Light Fastness, Ca Tb 117-2013, Shown Railroaded, Exclusive Pattern