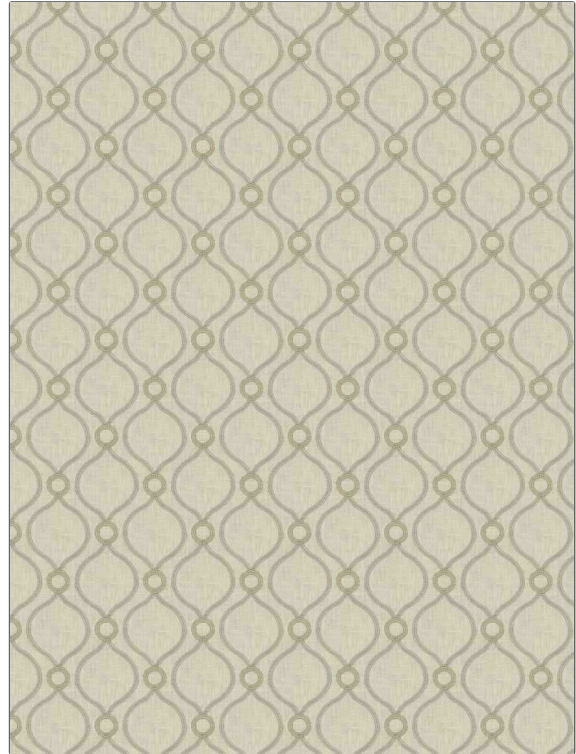


| | |
|---|-------------------------------|
| PATTERN | Straddle |
| COLOR | Smoke |
| BRAND | APPLICATION |
| Fabricut | Fabric |
| USES | CATEGORIES |
| Bedding, Drapery | Crewels / Embroideries |
| BOOK | COLORS |
| Natural Layers (4 Books) Fog | Grey |
| DESIGN TYPES | SCALE |
| Embroidery | Medium |
| DIRECTION SHOWN | |
| Up the Bolt | |



| | | | |
|-----------------------------|---------------------------|---------------------------|--|
| WIDTH | VERTICAL REPEAT | HORIZONTAL REPEAT | CONTENT |
| 51.00 in (129.54 cm) | 4.62 in (11.73 cm) | 4.62 in (11.73 cm) | Embroidery: 100% Polyester, Base: 70% Polyester, 30% Cotton |
| BACKING | FIRE CODES | PRODUCT NUMBER | DATE BOOKED |
| | UFAC Class I | 6914106 | 07/2022 |
| COUNTRY | CLEANING CODES | | |
| India | S | | |

ADDITIONAL PRODUCT NOTES

Ca Tb 117-2013, Embroidered Textiles Are Not, Guaranteed For Precise Color, Matching And Colorfastness., Color Placement Of Embroidery, May Vary. All Measurements, Quoted For Repeats Are, Approximate.