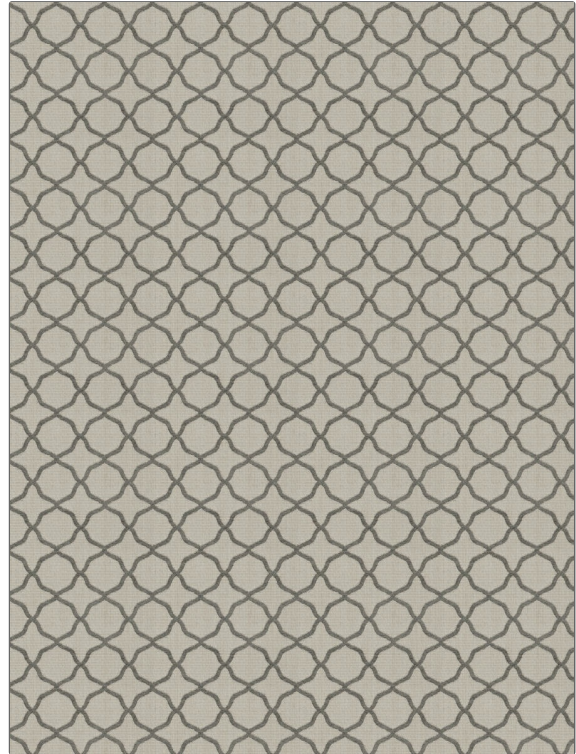


PATTERN **Basilica**
COLOR **Coal**

BRAND	APPLICATION
Fabricut	Fabric
USES	CATEGORIES
Bedding, Drapery, Multipurpose, Upholstery	Wovens, Chenille
BOOK	COLORS
French General Vol. II Musee	Black, Grey
DESIGN TYPES	SCALE
Lattice / Fretwork, Small Scale Woven, Ogee	Small
DIRECTION SHOWN	
Up the Bolt	



WIDTH	VERTICAL REPEAT	HORIZONTAL REPEAT	CONTENT
54.00 in (137.16 cm)	2.12 in (5.38 cm)	2.25 in (5.72 cm)	73% Rayon, 27% Polyester
BACKING	FIRE CODES	DOUBLE RUBS	PRODUCT NUMBER
	UFAC Class I / NFPA 260	Exceeds 12,000 Double Rubs (Wyzenbeek Method)	7577601
DATE BOOKED	COUNTRY	CLEANING CODES	
02/2017	China	S	

ADDITIONAL PRODUCT NOTES

Ca Tb 117-2013, Exclusive Pattern