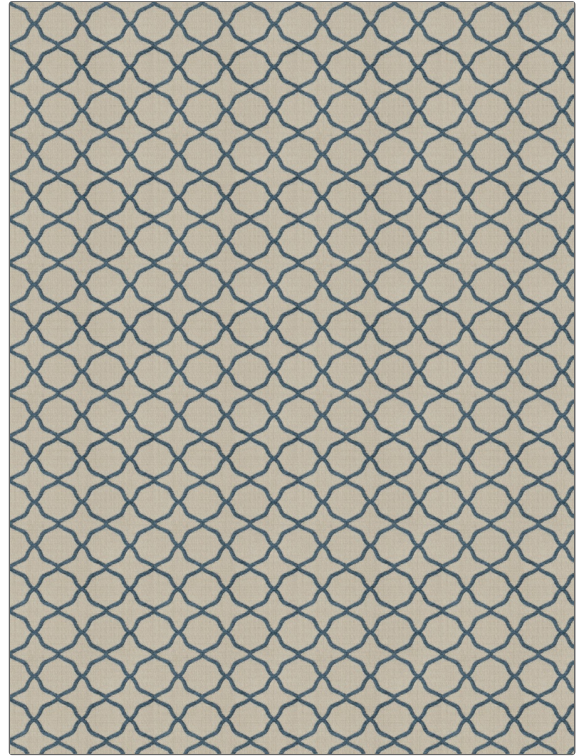


**PATTERN** **Basilica**  
**COLOR** **Indigo**

<b>BRAND</b>	<b>APPLICATION</b>
<b>Fabricut</b>	<b>Fabric</b>
<b>USES</b>	<b>CATEGORIES</b>
<b>Bedding, Drapery, Multipurpose, Upholstery</b>	<b>Wovens, Chenille</b>
<b>BOOK</b>	<b>COLORS</b>
<b>French General Vol. II Riviera</b>	<b>Blue, Navy</b>
<b>DESIGN TYPES</b>	<b>SCALE</b>
<b>Lattice / Fretwork, Small Scale Woven, Ogee</b>	<b>Small</b>
<b>DIRECTION SHOWN</b>	
<b>Up the Bolt</b>	



<b>WIDTH</b>	<b>VERTICAL REPEAT</b>	<b>HORIZONTAL REPEAT</b>	<b>CONTENT</b>
<b>54.00 in (137.16 cm)</b>	<b>2.12 in (5.38 cm)</b>	<b>2.25 in (5.72 cm)</b>	<b>73% Rayon, 27% Polyester</b>
<b>BACKING</b>	<b>FIRE CODES</b>	<b>DOUBLE RUBS</b>	<b>PRODUCT NUMBER</b>
	<b>UFAC Class I / NFPA 260</b>	<b>Exceeds 12,000 Double Rubs (Wyzenbeek Method)</b>	<b>7577603</b>
<b>DATE BOOKED</b>	<b>COUNTRY</b>	<b>CLEANING CODES</b>	
<b>02/2017</b>	<b>China</b>	<b>S</b>	

**ADDITIONAL PRODUCT NOTES**

**Ca Tb 117-2013, Exclusive Pattern**