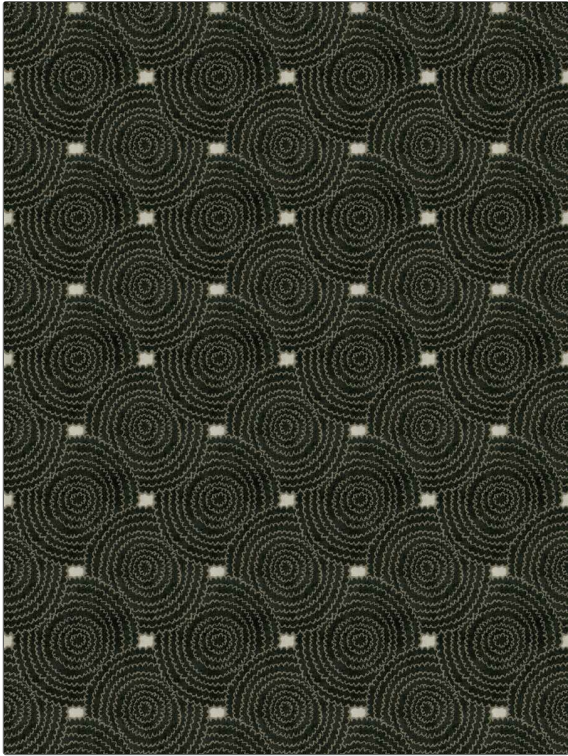


PATTERN Cholet
COLOR Carbon

| | |
|---------------------------------------|--------------------|
| BRAND | APPLICATION |
| Fabricut | Fabric |
| USES | CATEGORIES |
| Upholstery | Velvet / Grospoint |
| BOOK | COLORS |
| Lemieux Et Cie Atelier Ink | Black |
| DESIGN TYPES | SCALE |
| Contemporary / Modern, Dots / Circles | Large |
| DIRECTION SHOWN | |
| Up the Bolt | |



| | | | |
|----------------------|------------------------|---|----------------------------|
| WIDTH | VERTICAL REPEAT | HORIZONTAL REPEAT | CONTENT |
| 54.00 in (137.16 cm) | 13.50 in (34.29 cm) | 13.50 in (34.29 cm) | 62% Viscose, 38% Polyester |
| BACKING | FIRE CODES | DOUBLE RUBS | PRODUCT NUMBER |
| | UFAC Class I | Exceeds 15,000 Double Rubs (Wyzenbeek Method) | 7632401 |
| DATE BOOKED | COUNTRY | CLEANING CODES | |
| 07/2022 | India | S | |

ADDITIONAL PRODUCT NOTES

Ca Tb 117-2013, Exclusive Pattern