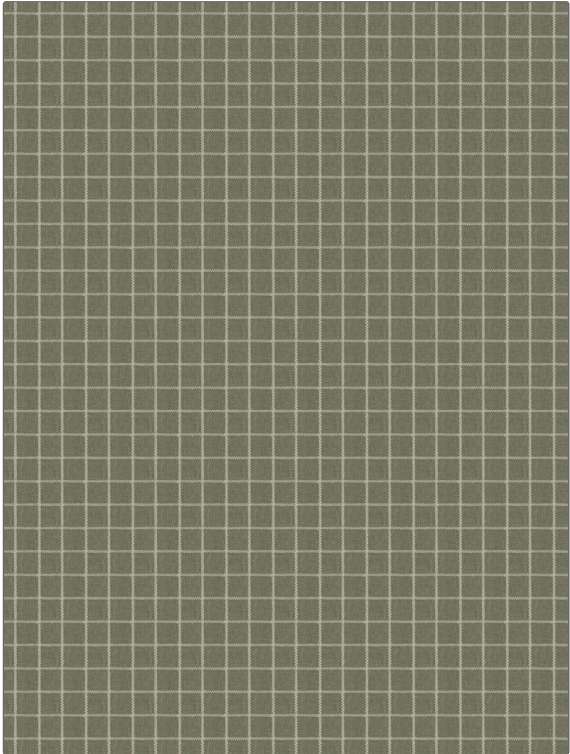


**PATTERN** Erebus  
**COLOR** Sage

|  |                    |
|--|--------------------|
| <b>BRAND</b>                           | <b>APPLICATION</b> |
| Fabricut                               | Fabric             |
| <b>USES</b>                            | <b>CATEGORIES</b>  |
| Bedding, Drapery, Multipurpose         | Wovens             |
| <b>BOOK</b>                            | <b>COLORS</b>      |
| Natural Layers (4 Books)<br>Cedar Sage | Green              |
| <b>DESIGN TYPES</b>                    | <b>SCALE</b>       |
| Check / Plaid                          | Small              |
| <b>DIRECTION SHOWN</b>                 |                    |
| Up the Bolt                            |                    |



|                      |                         |   |  |
|----------------------|-------------------------|---|--|
| <b>WIDTH</b>         | <b>VERTICAL REPEAT</b>  | <b>HORIZONTAL REPEAT</b>                      | <b>CONTENT</b>                                 |
| 54.00 in (137.16 cm) | 1.00 in (2.54 cm)       | 1.12 in (2.84 cm)                             | 39% Polyester, 38% Cotton, 16% Rayon, 7% Linen |
| <b>BACKING</b>       | <b>FIRE CODES</b>       | <b>DOUBLE RUBS</b>                            | <b>PRODUCT NUMBER</b>                          |
|                      | UFAC Class I / NFPA 260 | Exceeds 20,000 Double Rubs (Wyzenbeek Method) | 8073506  |
| <b>DATE BOOKED</b>   | <b>COUNTRY</b>          | <b>CLEANING CODES</b>                         |  |
| 07/2022              | India                   | S   |  |

**ADDITIONAL PRODUCT NOTES**

Ca Tb 117-2013, Exclusive Pattern