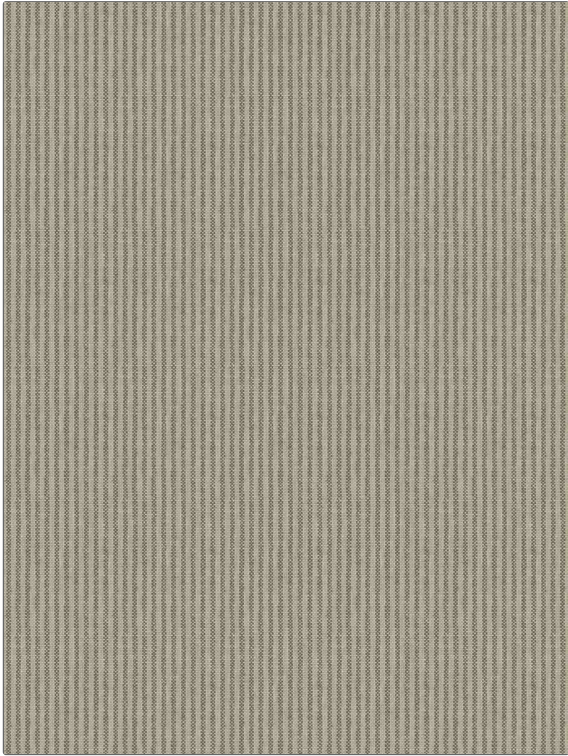


**PATTERN** Bitterroot  
**COLOR** Woodland

<b>BRAND</b>	<b>APPLICATION</b>
Fabricut	Fabric
<b>USES</b>	<b>CATEGORIES</b>
Bedding, Drapery, Multipurpose, Upholstery	Wovens
<b>BOOK</b>	<b>COLORS</b>
Avalon Lane	Brown
<b>DESIGN TYPES</b>	<b>SCALE</b>
Stripes	Small
<b>DIRECTION SHOWN</b>	
Up the Bolt	



<b>WIDTH</b>	<b>VERTICAL REPEAT</b>	<b>HORIZONTAL REPEAT</b>	<b>CONTENT</b>
54.00 in (137.16 cm)	0.00 in (0.00 cm)	0.12 in (0.30 cm)	55% Linen, 45% Cotton
<b>BACKING</b>	<b>FIRE CODES</b>	<b>DOUBLE RUBS</b>	<b>PRODUCT NUMBER</b>
	UFAC Class I	Exceeds 21,000 Double Rubs (Wyzenbeek Method)	8105402
<b>DATE BOOKED</b>	<b>COUNTRY</b>	<b>CLEANING CODES</b>	
11/2022	China	S	

**ADDITIONAL PRODUCT NOTES**

Ca Tb 117-2013, Sand Washed