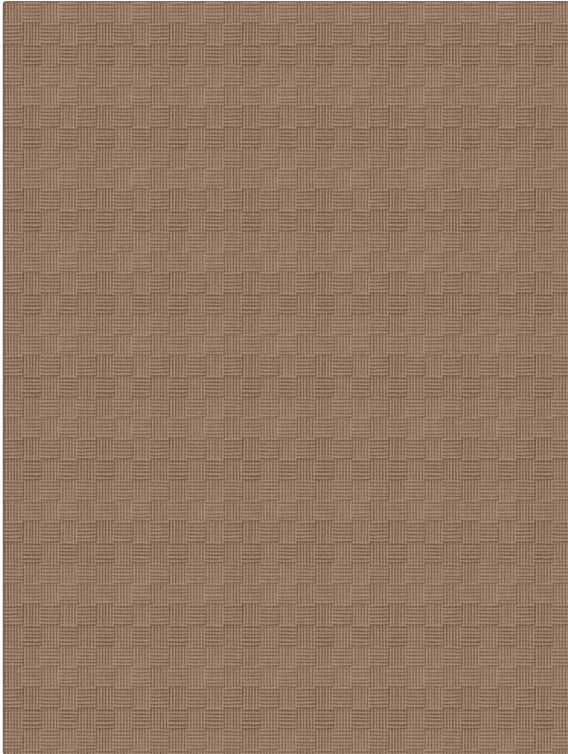


<b>PATTERN</b>	<b>Pelee</b>
<b>COLOR</b>	<b>Bayberry</b>

<b>BRAND</b>	<b>APPLICATION</b>
<b>Fabricut</b>	<b>Fabric</b>
<b>USES</b>	<b>CATEGORIES</b>
<b>Bedding, Drapery, Multipurpose, Upholstery</b>	<b>Wovens</b>
<b>BOOK</b>	<b>COLORS</b>
<b>Natural Layers (4 Books) Cedar Sage</b>	<b>Red</b>
<b>DESIGN TYPES</b>	<b>SCALE</b>
<b>Check / Plaid</b>	<b>Small</b>
<b>DIRECTION SHOWN</b>	
<b>Up the Bolt</b>	



<b>WIDTH</b>	<b>VERTICAL REPEAT</b>	<b>HORIZONTAL REPEAT</b>	<b>CONTENT</b>
<b>54.00 in (137.16 cm)</b>	<b>2.00 in (5.08 cm)</b>	<b>3.50 in (8.89 cm)</b>	<b>67% Polyester, 18% Cotton, 15% Linen</b>
<b>BACKING</b>	<b>FIRE CODES</b>	<b>DOUBLE RUBS</b>	<b>PRODUCT NUMBER</b>
	<b>UFAC Class I</b>	<b>Exceeds 51,000 Double Rubs (Wyzenbeek Method)</b>	<b>8140402</b>
<b>DATE BOOKED</b>	<b>COUNTRY</b>	<b>CLEANING CODES</b>	
<b>07/2022</b>	<b>India</b>	<b>S</b>	

<b>ADDITIONAL PRODUCT NOTES</b>
<b>Ca Tb 117-2013</b>