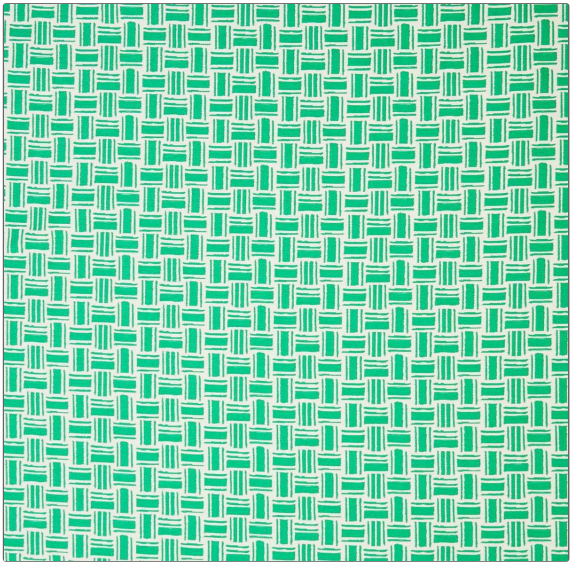


**PATTERN** Arbor  
**COLOR** Jade



<b>BRAND</b>	<b>APPLICATION</b>
Liberty of London	Fabric
<b>USES</b>	<b>CATEGORIES</b>
Upholstery	Outdoor, Wovens
<b>BOOK</b>	<b>COLORS</b>
LOL The Liberty Garden Indoor / Outdoor	Green
<b>DESIGN TYPES</b>	<b>SCALE</b>
Geometric	Medium
<b>RAILROADED</b>	
Not Railroaded	

<b>WIDTH</b>	<b>VERTICAL REPEAT</b>	<b>HORIZONTAL REPEAT</b>	<b>CONTENT</b>
56.00 in (142.24 cm)	3.10 in (7.87 cm)	9.20 in (23.37 cm)	100% Polypropylene
<b>BACKING</b>	<b>FIRE CODES</b>	<b>DOUBLE RUBS</b>	<b>PRODUCT NUMBER</b>
	UFAC Class I / NFPA 260	Exceeds 35,000 Double Rubs	8151502
<b>DATE BOOKED</b>	<b>COUNTRY</b>	<b>CLEANING CODES</b>	
05/2021	Italy	S, WASHABLE	

**ADDITIONAL PRODUCT NOTES**  
 Passes 35,000 Martindale Tst, Indoor / Outdoor, Ca Tb 117-2013, Exclusive Pattern, Washable