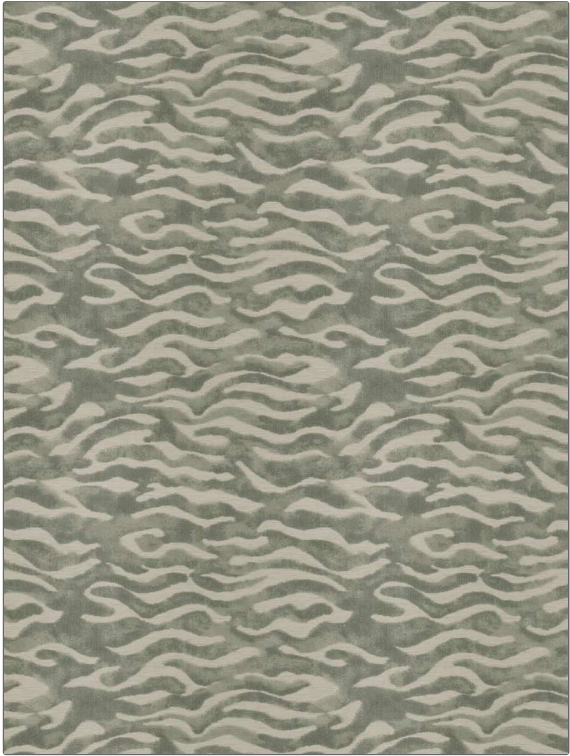


PATTERN Bawah
COLOR Thyme

| | |
|------------------------|--------------------------------------|
| BRAND | APPLICATION |
| Fabricut | Fabric |
| USES | CATEGORIES |
| Upholstery | Velvet / Grospoint, Wovens, Chenille |
| BOOK | COLORS |
| Luxe Home Ocean / Ink | Light Green |
| DESIGN TYPES | SCALE |
| Animal Skins | Medium |
| DIRECTION SHOWN | |
| Up the Bolt | |



| | | | |
|----------------------|-------------------------|---|----------------------------|
| WIDTH | VERTICAL REPEAT | HORIZONTAL REPEAT | CONTENT |
| 55.00 in (139.70 cm) | 15.25 in (38.74 cm) | 13.87 in (35.23 cm) | 59% Polyester, 41% Viscose |
| BACKING | FIRE CODES | DOUBLE RUBS | PRODUCT NUMBER |
| 100% Latex Backing | UFAC Class I / NFPA 260 | Exceeds 30,000 Double Rubs (Wyzenbeek Method) | 8406202 |
| DATE BOOKED | COUNTRY | CLEANING CODES | |
| 04/2023 | India | S | |

ADDITIONAL PRODUCT NOTES
Ca Tb 117-2013, 100% Latex Backing, Exclusive Pattern