

**PATTERN** Crossfade  
**COLOR** Fire

**BRAND**  
**Fabricut**

**APPLICATION**  
**Fabric**

**USES**  
**Bedding, Drapery**

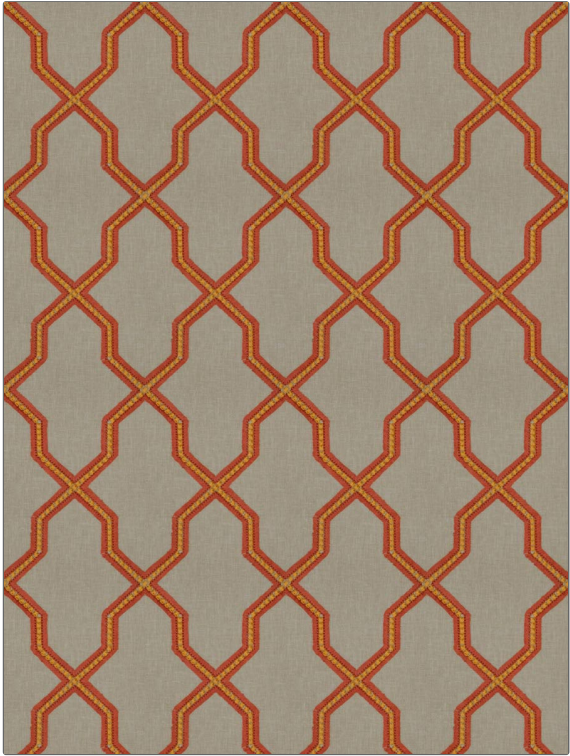
**CATEGORIES**  
**Crewels / Embroideries**

**COLORS**  
**Orange / Spice, Coral / Peach**

**DESIGN TYPES**  
**Embroidery, Lattice / Fretwork, Novelty, Ogee**

**SCALE**  
**Medium**

**RAILROADED**  
**Not Railroaded**



WIDTH	VERTICAL REPEAT	HORIZONTAL REPEAT	CONTENT
51.00 in (129.54 cm)	9.00 in (22.86 cm)	6.75 in (17.14 cm)	<b>Embroidery: 100% Viscose, Base: 60% Polyester, 25% Cotton, 15% Linen</b>
BACKING	PRODUCT NUMBER	COUNTRY	CLEANING CODES
	8661701	India	S

**ADDITIONAL PRODUCT NOTES**

Ca Tb 117-2013, Exclusive Pattern, Embroidered Textiles Are Not, Guaranteed For Precise Color, Matching And Colorfastness., Color Placement Of Embroidery, May Vary. All Measurements, Quoted For Repeats Are, Approximate.