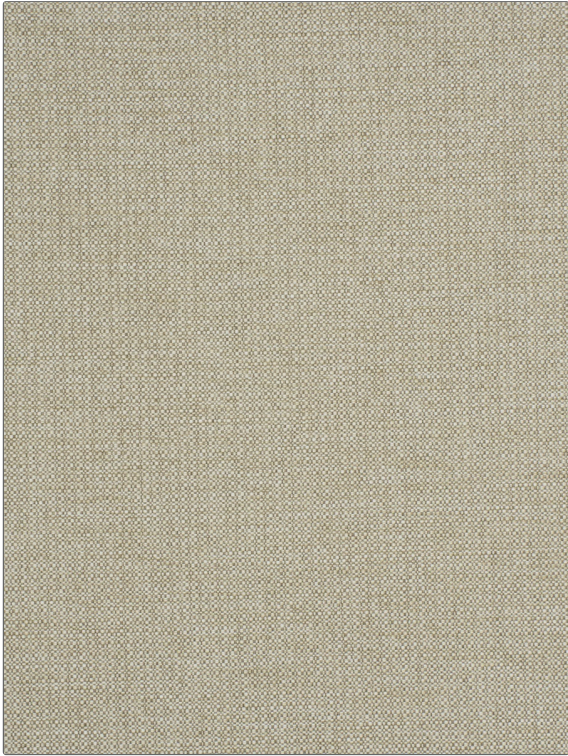


# FABRICUT<sup>®</sup> Fabric Product Details

|                |             |
|----------------|-------------|
| <b>PATTERN</b> | <b>Zuma</b> |
| <b>COLOR</b>   | <b>Buff</b> |

|  |  |
|--|--|
| <b>BRAND</b>                           | <b>APPLICATION</b>   |
| <b>Fabricut</b>                        | <b>Fabric</b>  |
| <b>USES</b>                            | <b>CATEGORIES</b>  |
| <b>Upholstery</b>                      | <b>Easy To Clean, Fibreguard, Wovens, Eco / Environment Plus</b> |
| <b>BOOK</b>                            | <b>COLORS</b>  |
| <b>Fibreguard Performance Textures</b> | <b>Taupe / Tan</b>   |
| <b>DESIGN TYPES</b>                    | <b>RAILROADED</b>  |
| <b>Texture Plain</b>                   | <b>Not Railroaded</b>  |



|                             |                    |                                |  |
|-----------------------------|--------------------|--------------------------------|--|
| <b>WIDTH</b>                | <b>FINISH</b>      | <b>VERTICAL REPEAT</b>         | <b>HORIZONTAL REPEAT</b>                             |
| <b>55.00 in (139.70 cm)</b> | <b>Fibreguard</b>  | <b>0.00 in (0.00 cm)</b>       | <b>0.00 in (0.00 cm)</b>                             |
| <b>CONTENT</b>              | <b>BACKING</b>     | <b>FIRE CODES</b>              | <b>DOUBLE RUBS</b>                                   |
| <b>100% Polyester</b>       |                    | <b>UFAC Class I / NFPA 260</b> | <b>Exceeds 30,000 Double Rubs (Wyzenbeek Method)</b> |
| <b>PRODUCT NUMBER</b>       | <b>DATE BOOKED</b> | <b>COUNTRY</b>                 | <b>CLEANING CODES</b>                                |
| <b>9024830</b>              | <b>02/2018</b>     | <b>India</b>                   | <b>WW</b>  |

|  |
|--|
| <b>ADDITIONAL PRODUCT NOTES</b>  |
| <b>Fibreguard, Pfas-Free, Easy To Clean Finish, Passes 30,000 Martindale Tst, Oeko Tex Standard 100, Ca Tb 117-2013, Exclusive Pattern, Eco / Environment Plus</b> |