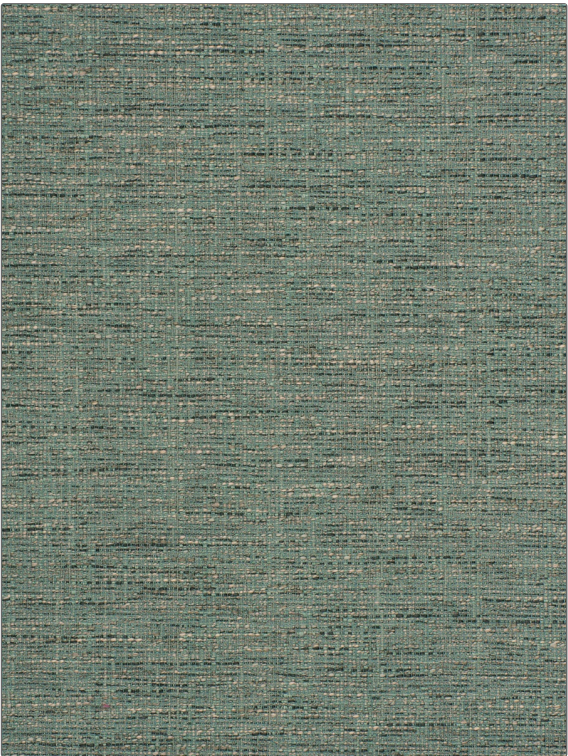


PATTERN	Spoletto
COLOR	Mineral

BRAND	APPLICATION
Fabricut	Fabric
USES	CATEGORIES
Upholstery	Easy To Clean, Fibreguard, Wovens, Eco / Environment Plus
BOOK	COLORS
Fibreguard Performance Textures	Aqua / Teal
DESIGN TYPES	RAILROADED
Texture Plain	Not Railroaded



WIDTH	FINISH	VERTICAL REPEAT	HORIZONTAL REPEAT
55.00 in (139.70 cm)	Fibreguard	0.00 in (0.00 cm)	0.00 in (0.00 cm)
CONTENT	BACKING	FIRE CODES	DOUBLE RUBS
61% Acrylic, 39% Polyester		UFAC Class I / NFPA 260	Exceeds 190,000 Double Rubs (Wyzenbeek Method)
PRODUCT NUMBER	DATE BOOKED	COUNTRY	CLEANING CODES
9025204	02/2018	Turkey	WW

ADDITIONAL PRODUCT NOTES
Fibreguard, Pfas-Free, Easy To Clean Finish, Passes 30,000 Martindale Tst, Oeko Tex Standard 100, Ca Tb 117-2013, Exclusive Pattern, Eco / Environment Plus