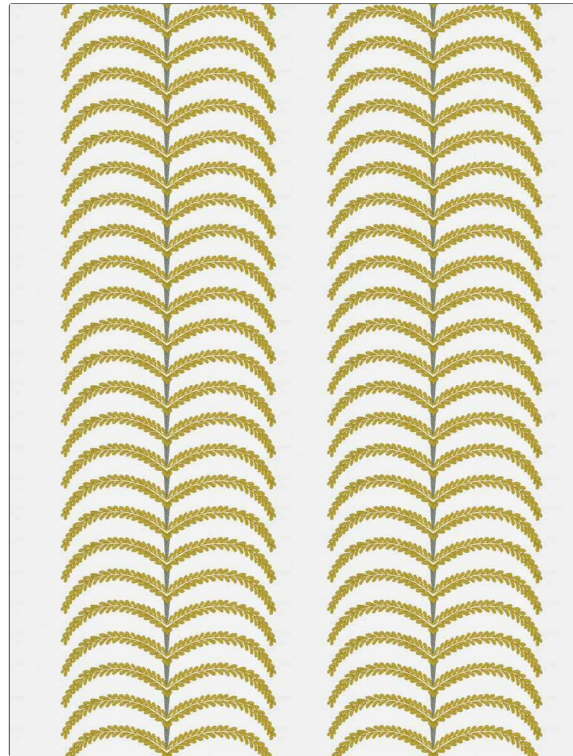


PATTERN	Growing In Love
COLOR	Pot Of Gold
BRAND	APPLICATION
Fabricut	Fabric
USES	CATEGORIES
Bedding, Drapery	Crewels / Embroideries
BOOK	COLORS
Bloom & Lattice (3 Books) Dahlia	Gold
DESIGN TYPES	SCALE
Embroidery, Leaves	Large
DIRECTION SHOWN	
Up the Bolt	



WIDTH	VERTICAL REPEAT	HORIZONTAL REPEAT	CONTENT
51.00 in (129.54 cm)	2.00 in (5.08 cm)	12.75 in (32.38 cm)	Embroidery: 100% Polyester, Base: 100% Cotton
BACKING	PRODUCT NUMBER	DATE BOOKED	COUNTRY
	9028503	08/2023	India
CLEANING CODES			
S			

ADDITIONAL PRODUCT NOTES

Exclusive Pattern, Embroidered Textiles Are Not, Guaranteed For Precise Color, Matching And Colorfastness., Color Placement Of Embroidery, May Vary. All Measurements, Quoted For Repeats Are, Approximate.