

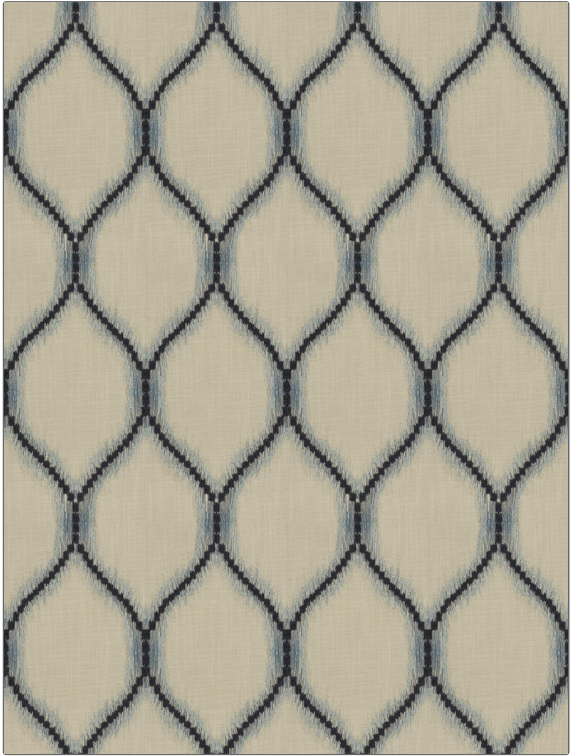
**PATTERN** Thonis  
**COLOR** 01

**BRAND**  
Fabricut  
**APPLICATION**  
Fabric

**USES**  
Bedding, Drapery  
**CATEGORIES**  
Crewels / Embroideries

**COLORS**  
Blue, Navy  
**DESIGN TYPES**  
Embroidery, Ogee

**SCALE**  
Large  
**DIRECTION SHOWN**  
Up the Bolt



WIDTH	VERTICAL REPEAT	HORIZONTAL REPEAT	CONTENT
51.00 in (129.54 cm)	12.50 in (31.75 cm)	6.75 in (17.14 cm)	Embroidery: 100% Rayon, Base: 52% Polyester, 48% Cotton
BACKING	PRODUCT NUMBER	COUNTRY	CLEANING CODES
	9085401	India	S

**ADDITIONAL PRODUCT NOTES**

Embroidered Textiles Are Not, Guaranteed For Precise Color, Matching And Colorfastness., Color Placement Of Embroidery, May Vary. All Measurements, Quoted For Repeats Are, Approximate.