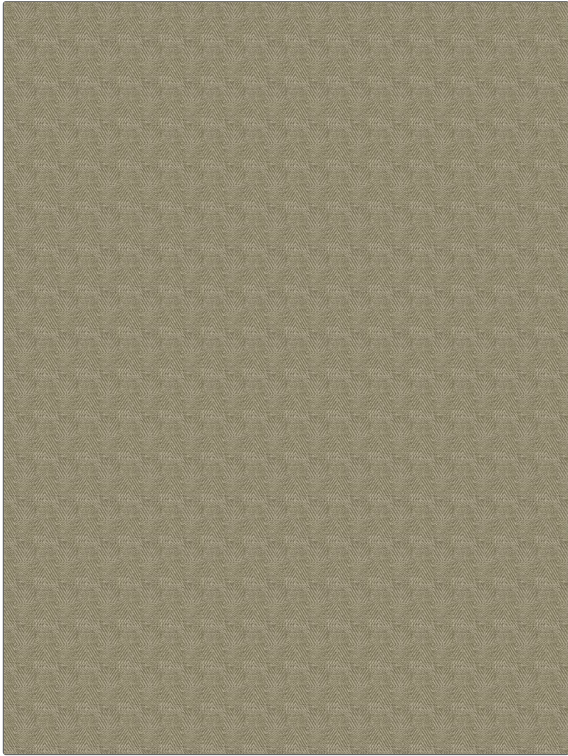


PATTERN Berm
COLOR Wheat

| | |
|---|---|
| BRAND | APPLICATION |
| Fabricut | Fabric |
| USES | CATEGORIES |
| Upholstery | Crypton Home, Easy To Clean, Wovens, Chenille, Eco / Environment Plus |
| BOOK | COLORS |
| Crypton Home Perf By Color (4 Books) Cinder | Linen |
| DESIGN TYPES | SCALE |
| Check / Plaid | Small |
| DIRECTION SHOWN | |
| Up the Bolt | |



| | | | |
|---------------------------|--------------------|-------------------------|--|
| WIDTH | FINISH | VERTICAL REPEAT | HORIZONTAL REPEAT |
| 54.00 in (137.16 cm) | Crypton Home | 2.00 in (5.08 cm) | 2.00 in (5.08 cm) |
| CONTENT | BACKING | FIRE CODES | DOUBLE RUBS |
| 52% Cotton, 48% Polyester | | UFAC Class I / NFPA 260 | Exceeds 100,000 Double Rubs (Wyzenbeek Method) |
| PRODUCT NUMBER | DATE BOOKED | COUNTRY | CLEANING CODES |
| 9155204 | 04/2023 | USA | WS |

ADDITIONAL PRODUCT NOTES

Crypton Home, Soil & Stain Repellent Finish, Pfas-Free, Easy To Clean, Ca Tb 117-2013, Anti-Bacterial / Anti-Microbial, Eco / Environment Plus, Greenguard Gold Certified