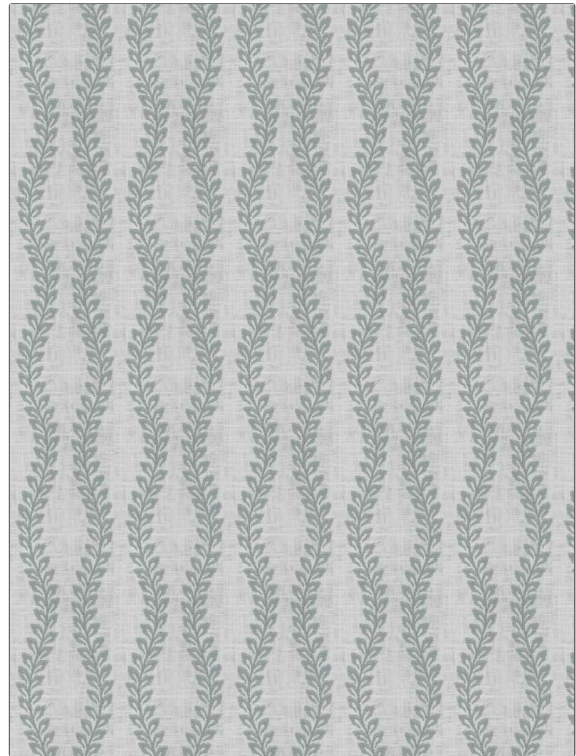


**PATTERN** Nature Garnish  
**COLOR** Hydrangea

<b>BRAND</b>	<b>APPLICATION</b>
Fabricut	Fabric
<b>USES</b>	<b>CATEGORIES</b>
Bedding, Drapery	Crewels / Embroideries, Linen
<b>BOOK</b>	<b>COLORS</b>
Bloom & Lattice (3 Books) Waterlily	Aqua / Teal
<b>DESIGN TYPES</b>	<b>SCALE</b>
Embroidery, Leaves, Ogee	Medium
<b>RAILOADED</b>	
Not Railroaded	



<b>WIDTH</b>	<b>VERTICAL REPEAT</b>	<b>HORIZONTAL REPEAT</b>	<b>CONTENT</b>
52.00 in (132.08 cm)	7.75 in (19.68 cm)	5.25 in (13.34 cm)	Embroidery: 100% Viscose, Base: 55% Linen, 45% Cotton
<b>BACKING</b>	<b>PRODUCT NUMBER</b>	<b>DATE BOOKED</b>	<b>COUNTRY</b>
	9187703	08/2023	China
<b>CLEANING CODES</b>			
S			

**ADDITIONAL PRODUCT NOTES**

Exclusive Pattern, Embroidered Textiles Are Not, Guaranteed For Precise Color, Matching And Colorfastness., Color Placement Of Embroidery, May Vary. All Measurements, Quoted For Repeats Are, Approximate.