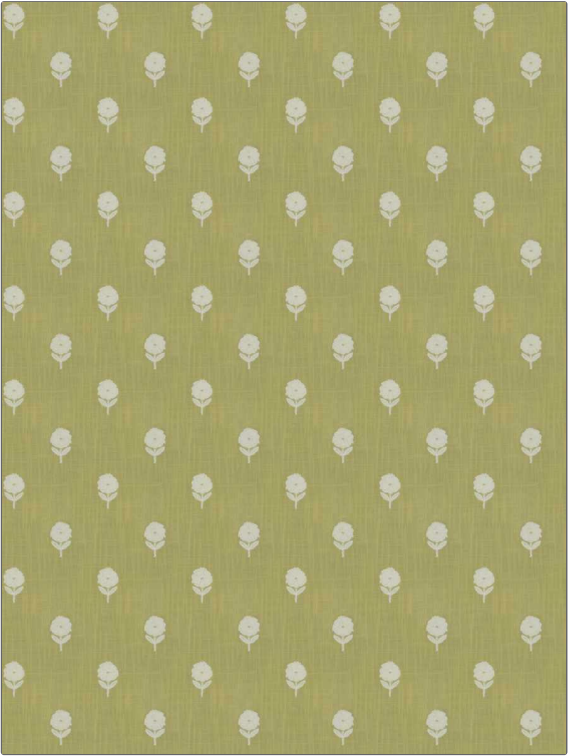


PATTERN	Lovely Bloom
COLOR	Daisy

BRAND	APPLICATION
Fabricut	Fabric
USES	CATEGORIES
Bedding, Drapery	Crewels / Embroideries
BOOK	COLORS
Bloom & Lattice (3 Books) Dahlia	Yellow
DESIGN TYPES	SCALE
Embroidery, Floral, Kids	Small
DIRECTION SHOWN	
Up the Bolt	



WIDTH	VERTICAL REPEAT	HORIZONTAL REPEAT	CONTENT
51.00 in (129.54 cm)	4.75 in (12.06 cm)	4.25 in (10.80 cm)	Embroidery: 100% Cotton, Base: 52% Cotton, 48% Polyester
BACKING	PRODUCT NUMBER	DATE BOOKED	COUNTRY
	9194706	08/2023	India
CLEANING CODES			
S			

ADDITIONAL PRODUCT NOTES
Exclusive Pattern, Embroidered Textiles Are Not, Guaranteed For Precise Color, Matching And Colorfastness., Color Placement Of Embroidery, May Vary. All Measurements, Quoted For Repeats Are, Approximate.