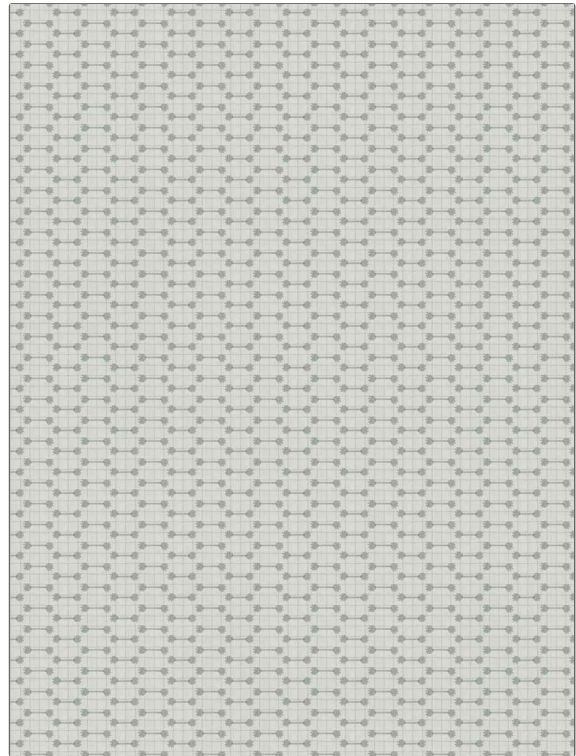


PATTERN Troweler
COLOR Water Lily

| | |
|--|------------------------|
| BRAND | APPLICATION |
| Fabricut | Fabric |
| USES | CATEGORIES |
| Bedding, Drapery | Crewels / Embroideries |
| BOOK | COLORS |
| Bloom & Lattice (3 Books) Waterlily | Aqua / Teal |
| DESIGN TYPES | SCALE |
| Embroidery, Check / Plaid | Small |
| DIRECTION SHOWN | |
| Up the Bolt | |



| | | | |
|-----------------------|------------------------|--------------------------|---|
| WIDTH | VERTICAL REPEAT | HORIZONTAL REPEAT | CONTENT |
| 52.00 in (132.08 cm) | 1.00 in (2.54 cm) | 2.75 in (6.98 cm) | Embroidery: 100% Cotton, Base: 100% Cotton |
| BACKING | PRODUCT NUMBER | DATE BOOKED | COUNTRY |
| | 9210602 | 08/2023 | India |
| CLEANING CODES | | | |
| S | | | |

ADDITIONAL PRODUCT NOTES

Exclusive Pattern, Embroidered Textiles Are Not, Guaranteed For Precise Color, Matching And Colorfastness., Color Placement Of Embroidery, May Vary. All Measurements, Quoted For Repeats Are, Approximate.