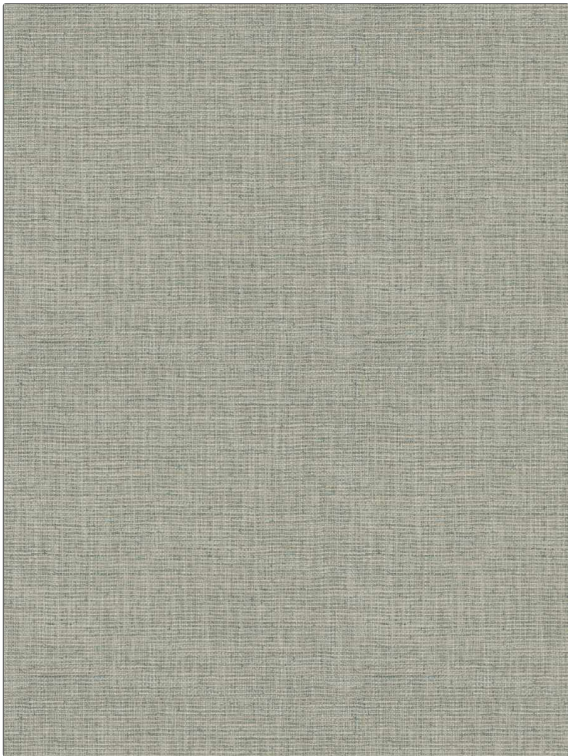


PATTERN Ever Wonder
COLOR Water Lily



BRAND	APPLICATION
Fabricut	Fabric
USES	CATEGORIES
Bedding, Drapery, Multipurpose	Wovens, Solids / Small Scale Patterns
BOOK	COLORS
Bloom & Lattice (3 Books) Waterlily	Aqua / Teal
DESIGN TYPES	DIRECTION SHOWN
Small Scale Woven, Texture Plain	Up the Bolt

WIDTH	VERTICAL REPEAT	HORIZONTAL REPEAT	CONTENT
54.00 in (137.16 cm)	0.00 in (0.00 cm)	0.00 in (0.00 cm)	100% Polyester
BACKING	FIRE CODES	DOUBLE RUBS	PRODUCT NUMBER
	UFAC Class I / NFPA 260	Exceeds 30,000 Double Rubs (Wyzenbeek Method)	9216601
DATE BOOKED	COUNTRY	CLEANING CODES	
08/2023	India	S	

ADDITIONAL PRODUCT NOTES

Passes 100,000 Martindale Tst, Ca Tb 117-2013, Exclusive Pattern