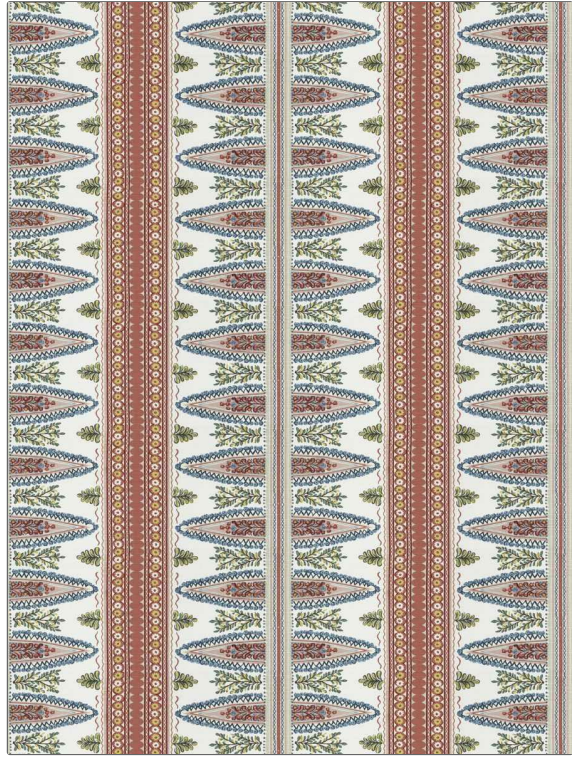


<b>PATTERN</b>	<b>Garden Row</b>
<b>COLOR</b>	<b>Dahlia</b>
<b>BRAND</b>	<b>APPLICATION</b>
<b>Fabricut</b>	<b>Fabric</b>
<b>USES</b>	<b>CATEGORIES</b>
<b>Bedding, Drapery, Multipurpose</b>	<b>Prints, Linen</b>
<b>BOOK</b>	<b>COLORS</b>
<b>Bloom &amp; Lattice (3 Books) Dahlia</b>	<b>Pink, Red, Multi-Color</b>
<b>DESIGN TYPES</b>	<b>SCALE</b>
<b>Floral, Novelty, Paisley, Stripes</b>	<b>Medium</b>
<b>DIRECTION SHOWN</b>	
<b>Up the Bolt</b>	



<b>WIDTH</b>	<b>VERTICAL REPEAT</b>	<b>HORIZONTAL REPEAT</b>	<b>CONTENT</b>
<b>54.00 in (137.16 cm)</b>	<b>6.75 in (17.14 cm)</b>	<b>13.50 in (34.29 cm)</b>	<b>44% Cotton, 31% Linen, 25% Rayon</b>
<b>BACKING</b>	<b>FIRE CODES</b>	<b>DOUBLE RUBS</b>	<b>PRODUCT NUMBER</b>
	<b>UFAC Class I / NFPA 260</b>	<b>Exceeds 36,000 Double Rubs (Wyzenbeek Method)</b>	<b>9399803</b>
<b>DATE BOOKED</b>	<b>COUNTRY</b>	<b>CLEANING CODES</b>	
<b>08/2023</b>	<b>China</b>	<b>S</b>	

<b>ADDITIONAL PRODUCT NOTES</b>
<b>Ca Tb 117-2013, Exclusive Pattern</b>