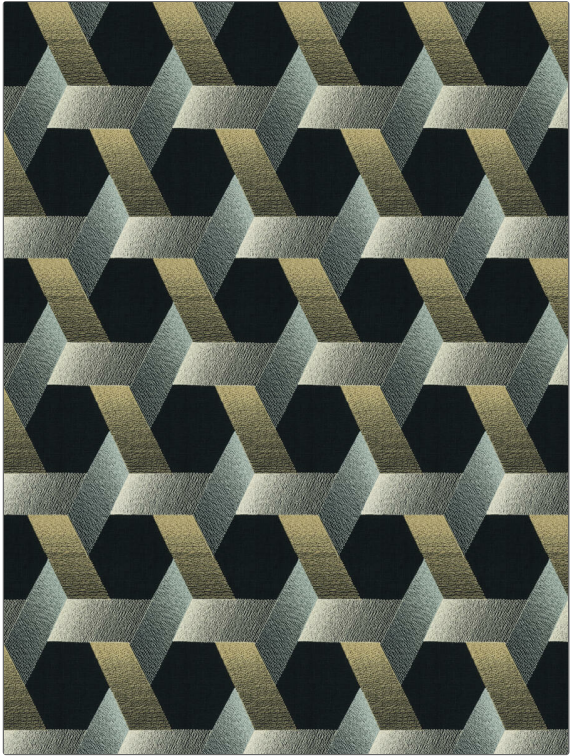


**PATTERN** Molina Hexagon  
**COLOR** Inkwood

<b>BRAND</b>	<b>APPLICATION</b>
Fabricut	Fabric
<b>USES</b>	<b>CATEGORIES</b>
Bedding, Drapery	Crewels / Embroideries, Linen
<b>COLORS</b>	<b>DESIGN TYPES</b>
Blue	Embroidery, Geometric, Contemporary / Modern
<b>SCALE</b>	<b>DIRECTION SHOWN</b>
Large	Up the Bolt



<b>WIDTH</b>	<b>VERTICAL REPEAT</b>	<b>HORIZONTAL REPEAT</b>	<b>CONTENT</b>
51.00 in (129.54 cm)	12.50 in (31.75 cm)	6.37 in (16.18 cm)	Embroidery: 100% Polyester, Base: 100% Linen
<b>BACKING</b>	<b>PRODUCT NUMBER</b>	<b>COUNTRY</b>	<b>CLEANING CODES</b>
	0959702	India	S

**ADDITIONAL PRODUCT NOTES**

Ca Tb 117-2013, Exclusive Pattern, Embroidered Textiles Are Not, Guaranteed For Precise Color, Matching And Colorfastness., Color Placement Of Embroidery, May Vary. All Measurements, Quoted For Repeats Are, Approximate.