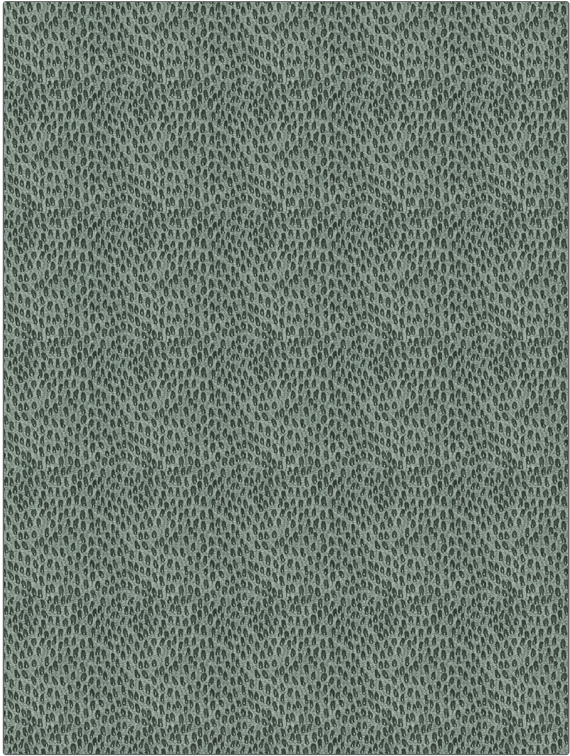


PATTERN Rye Dot
COLOR Loden

BRAND	APPLICATION
Fabricut	Fabric
USES	CATEGORIES
Bedding, Drapery, Multipurpose	Crewels / Embroideries
BOOK	COLORS
Collective Threads (4 Books) Patina	Metallic, Green, Aqua / Teal
DESIGN TYPES	SCALE
Embroidery, Global / Ethnic, Texture Plain	Small
DIRECTION SHOWN	
Up the Bolt	



WIDTH	VERTICAL REPEAT	HORIZONTAL REPEAT	CONTENT
47.00 in (119.38 cm)	6.25 in (15.88 cm)	5.75 in (14.60 cm)	Embroidery: 80% Cotton, 20% Zari, Base: 70% Viscose, 30% Linen
BACKING	PRODUCT NUMBER	DATE BOOKED	COUNTRY
	0960103	02/2020	India
CLEANING CODES			
S			

ADDITIONAL PRODUCT NOTES

Exclusive Pattern, Embroidered Textiles Are Not, Guaranteed For Precise Color, Matching And Colorfastness., Color Placement Of Embroidery, May Vary. All Measurements, Quoted For Repeats Are, Approximate.