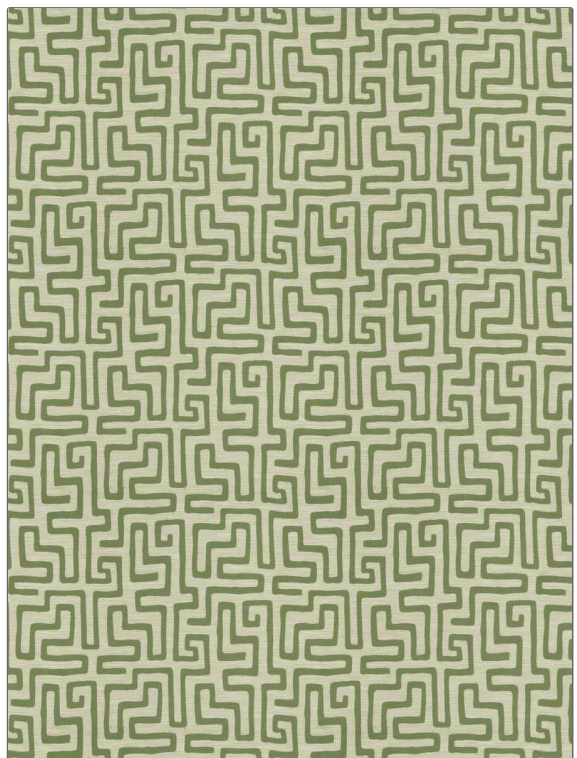


<b>PATTERN</b>	<b>Ridgeline</b>
<b>COLOR</b>	<b>Leaf</b>

<b>BRAND</b>	<b>APPLICATION</b>
<b>Fabricut</b>	<b>Fabric</b>
<b>USES</b>	<b>CATEGORIES</b>
<b>Upholstery</b>	<b>Crypton Home, Wovens</b>
<b>BOOK</b>	<b>COLORS</b>
<b>Color Studio Clean (3 Books) Leaf</b>	<b>Green</b>
<b>DESIGN TYPES</b>	<b>SCALE</b>
<b>Global / Ethnic, Jacquard Pattern, Contemporary / Modern, Abstract</b>	<b>Large</b>
<b>DIRECTION SHOWN</b>	
<b>Up the Bolt</b>	



<b>WIDTH</b>	<b>FINISH</b>	<b>VERTICAL REPEAT</b>	<b>HORIZONTAL REPEAT</b>
<b>56.00 in (142.24 cm)</b>	<b>Crypton Home</b>	<b>24.50 in (62.23 cm)</b>	<b>25.25 in (64.14 cm)</b>
<b>CONTENT</b>	<b>BACKING</b>	<b>FIRE CODES</b>	<b>DOUBLE RUBS</b>
<b>52% Polyester, 27% Rayon, 21% Cotton</b>	<b>Acrylic / Latex Backing</b>	<b>UFAC Class I / NFPA 260</b>	<b>Exceeds 51,000 Double Rubs (Wyzenbeek Method)</b>
<b>PRODUCT NUMBER</b>	<b>DATE BOOKED</b>	<b>COUNTRY</b>	<b>CLEANING CODES</b>
<b>9661102</b>	<b>02/2019</b>	<b>USA</b>	<b>W</b>

<b>ADDITIONAL PRODUCT NOTES</b>
<b>Crypton Home, Pfas-Free, Ca Tb 117-2013, Acrylic / Latex Backing, Exclusive Pattern</b>