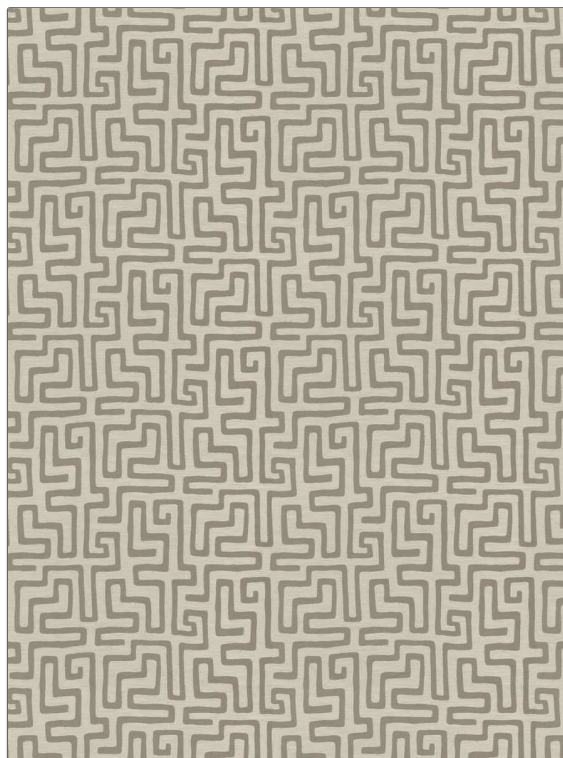


PATTERN	Ridgeline
COLOR	Birch
BRAND	APPLICATION
Fabricut	Fabric
USES	CATEGORIES
Upholstery	Crypton Home, Wovens
BOOK	COLORS
Color Studio Clean (3 Books) Birch	Taupe / Tan
DESIGN TYPES	SCALE
Global / Ethnic, Jacquard Pattern, Contemporary / Modern, Abstract	Large
DIRECTION SHOWN	
Up the Bolt	



WIDTH	FINISH	VERTICAL REPEAT	HORIZONTAL REPEAT
56.00 in (142.24 cm)	Crypton Home	24.50 in (62.23 cm)	25.25 in (64.14 cm)
CONTENT	BACKING	FIRE CODES	DOUBLE RUBS
52% Polyester, 27% Rayon, 21% Cotton	Acrylic / Latex Backing	UFAC Class I / NFPA 260	Exceeds 51,000 Double Rubs (Wyzenbeek Method)
PRODUCT NUMBER	DATE BOOKED	COUNTRY	CLEANING CODES
9661103	02/2019	USA	W

ADDITIONAL PRODUCT NOTES
Crypton Home, Pfas-Free, Ca Tb 117-2013, Acrylic / Latex Backing, Exclusive Pattern