

Fabric Product Details

PATTERN
COLOR

Transit Stripe
Galaxy

BRAND

S. Harris

APPLICATION

Fabric

USES

Upholstery

CATEGORIES

Outdoor, Velvet /
Grospoint

BOOK

Chroma S24

COLORS

Black, Blue, Burgundy

DESIGN TYPES

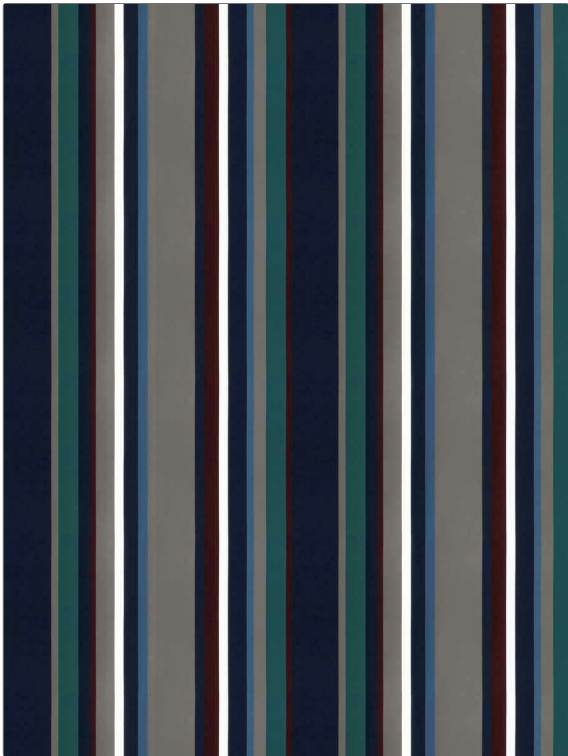
Stripes

SCALE

Large

DIRECTION SHOWN

Up the Bolt



WIDTH

55.00 in (139.70 cm)

FINISH

Easy To Clean Finish

VERTICAL REPEAT

0.00 in (0.00 cm)

HORIZONTAL REPEAT

27.50 in (69.85 cm)

CONTENT

100% Polyester

BACKING

100% Acrylic Backing

FIRE CODES

UFAC Class I / NFPA 260

DOUBLE RUBS

Exceeds 51,000 Double
Rubs (Wyzenbeek Method)

PRODUCT NUMBER

1411902

DATE BOOKED

01/2024

COUNTRY

Italy

CLEANING CODES

WS

ADDITIONAL PRODUCT NOTES

Easy To Clean Finish, Passes 100,000 Martindale Tst, Indoor / Outdoor, 1,200 Hours Light Fastness, Ca Tb 117-2013, 100% Acrylic Backing, Exclusive Pattern