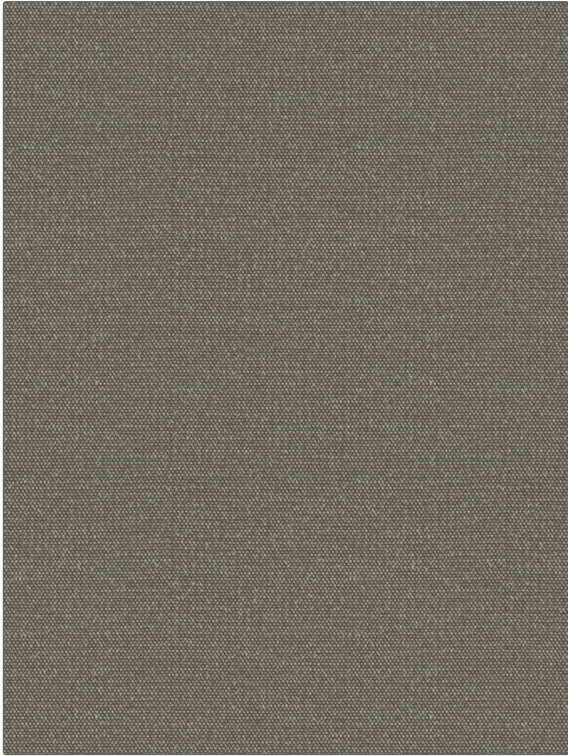


Fabric Product Details

| | |
|----------------|------------------|
| PATTERN | Sade Sati |
| COLOR | Saturn |

| | |
|---|---|
| BRAND | APPLICATION |
| S. Harris | Fabric |
| USES | CATEGORIES |
| Bedding, Drapery, Multipurpose, Upholstery | Outdoor, Solids / Small Scale Patterns, Chenille, Eco / Environment Plus |
| BOOK | COLORS |
| Elements Binder Outdoor Swatch Card | Linen |
| DESIGN TYPES | DIRECTION SHOWN |
| Texture Plain | Up the Bolt |



| | | | |
|---------------------------------------|-------------------------|--------------------------------|--|
| WIDTH | FINISH | VERTICAL REPEAT | HORIZONTAL REPEAT |
| 55.00 in (139.70 cm) | Mothproof Finish | 0.00 in (0.00 cm) | 0.00 in (0.00 cm) |
| CONTENT | BACKING | FIRE CODES | DOUBLE RUBS |
| 100% Solution Dyed Polyacrylic | | UFAC Class I / NFPA 260 | Exceeds 51,000 Double Rubs (Wyzenbeek Method) |
| PRODUCT NUMBER | DATE BOOKED | COUNTRY | CLEANING CODES |
| 1427101 | 11/2023 | Germany | WS |

| |
|--|
| ADDITIONAL PRODUCT NOTES |
| Mothproof Finish, Easy To Clean Finish, Passes 70,000 Martindale Tst, Oeko Tex Standard 100, Mildew Resistant, Indoor / Outdoor, 2,200 Hours Light Fastness, Ca Tb 117-2013, Eco / Environment Plus |