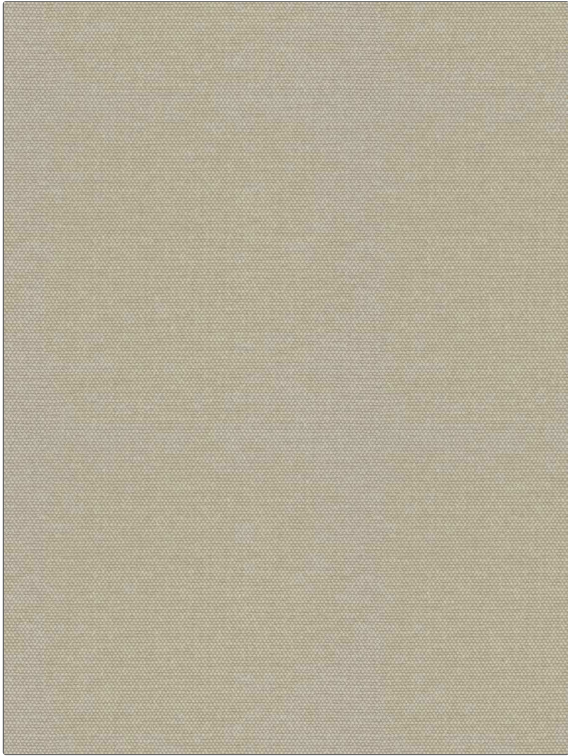


Fabric Product Details

PATTERN Sade Sati
COLOR Shani

BRAND	APPLICATION
S. Harris	Fabric
USES	CATEGORIES
Bedding, Drapery, Multipurpose, Upholstery	Outdoor, Solids / Small Scale Patterns, Chenille, Eco / Environment Plus
BOOK	COLORS
Elements Binder Outdoor Swatch Card	Beige
DESIGN TYPES	DIRECTION SHOWN
Texture Plain	Up the Bolt



WIDTH	FINISH	VERTICAL REPEAT	HORIZONTAL REPEAT
55.00 in (139.70 cm)	Mothproof Finish	0.00 in (0.00 cm)	0.00 in (0.00 cm)
CONTENT	BACKING	FIRE CODES	DOUBLE RUBS
100% Solution Dyed Polyacrylic		UFAC Class I / NFPA 260	Exceeds 51,000 Double Rubs (Wyzenbeek Method)
PRODUCT NUMBER	DATE BOOKED	COUNTRY	CLEANING CODES
1427102	11/2023	Germany	WS

ADDITIONAL PRODUCT NOTES

Mothproof Finish, Easy To Clean Finish, Passes 70,000 Martindale Tst, Oeko Tex Standard 100, Mildew Resistant, Indoor / Outdoor, 2,200 Hours Light Fastness, Ca Tb 117-2013, Eco / Environment Plus