

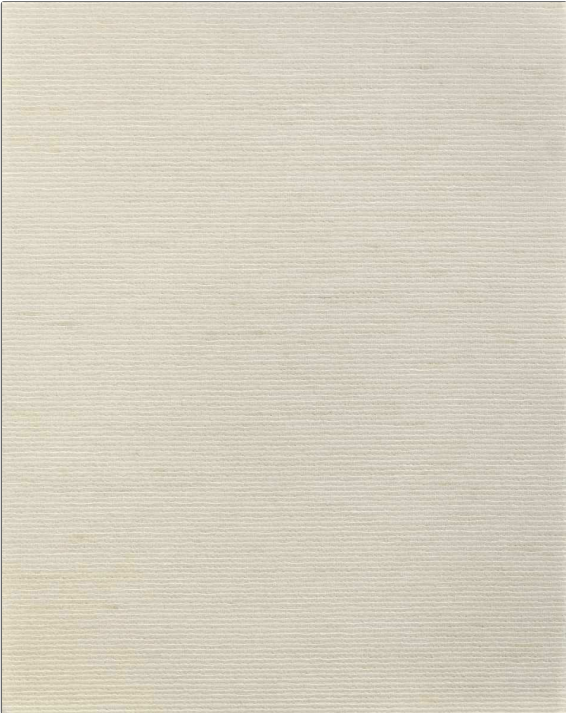
# Wallcovering Product Details

**PATTERN** Noor Plain WC  
**COLOR** Champagne

**BRAND** S. Harris  
**APPLICATION** Wallcovering

**CATEGORIES** ASTM-E84, En 15102, String / Textile, Linen  
**BOOK** Silk Wallcovering

**COLORS** Beige  
**DESIGN TYPES** Novelty, Solid, Texture Plain, Contemporary / Modern



<b>WIDTH</b> 43.00 in (109.22 cm)	<b>VERTICAL REPEAT</b> 0.00 in (0.00 cm)	<b>HORIZONTAL REPEAT</b> 0.00 in (0.00 cm)	<b>CONTENT</b> Face: 58% Linen, 42% Silk, Backing: 70% Wood Pulp, 30% Recycled Polye
<b>BACKING</b> Strippable, Pretrimmed	<b>FIRE CODES</b> Ce Mark Certified, Passes ASTM E-84 Class A Or 1, Passes EN15102 Class B-S1, Do	<b>PRODUCT NUMBER</b> 2005202	<b>DATE BOOKED</b> 05/2024
<b>COUNTRY</b> Netherlands			

**ADDITIONAL PRODUCT NOTES**  
 Soil & Stain Repellent Finish, Pfas-Free, Strippable, Pretrimmed, Paste The Wall, Fsc Certified, Ce Mark Certified, Random Match, Gently Vacuum With Soft Brush, Passes EN15102 Class B-S1, Do, Eco / Environment Plus