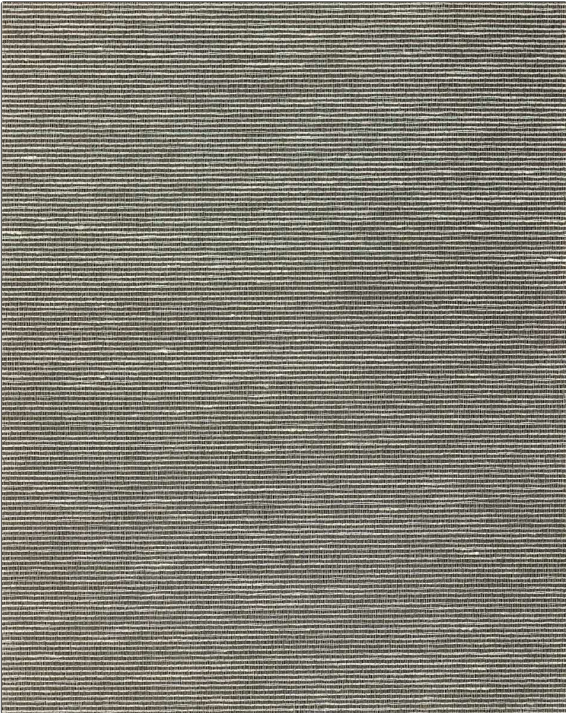


# Wallcovering Product Details

<b>PATTERN</b>	<b>Noor Plain WC</b>
<b>COLOR</b>	<b>Pewter</b>



<b>BRAND</b>	<b>S. Harris</b>	<b>APPLICATION</b>	<b>Wallcovering</b>
<b>CATEGORIES</b>	<b>ASTM-E84, En 15102, String / Textile, Linen</b>	<b>BOOK</b>	<b>Silk Wallcovering</b>
<b>COLORS</b>	<b>Grey</b>	<b>DESIGN TYPES</b>	<b>Novelty, Solid, Texture Plain, Contemporary / Modern</b>

<b>WIDTH</b>	<b>VERTICAL REPEAT</b>	<b>HORIZONTAL REPEAT</b>	<b>CONTENT</b>
43.00 in (109.22 cm)	0.00 in (0.00 cm)	0.00 in (0.00 cm)	Face: 58% Linen, 42% Silk, Backing: 70% Wood Pulp, 30% Recycled Polye
<b>BACKING</b>	<b>FIRE CODES</b>	<b>PRODUCT NUMBER</b>	<b>DATE BOOKED</b>
Strippable, Pretrimmed	Ce Mark Certified, Passes ASTM E-84 Class A Or 1, Passes EN15102 Class B-S1, Do	2005208	05/2024
<b>COUNTRY</b>			
Netherlands			

<b>ADDITIONAL PRODUCT NOTES</b>
Soil & Stain Repellent Finish, Pfas-Free, Strippable, Pretrimmed, Paste The Wall, Fsc Certified, Ce Mark Certified, Random Match, Gently Vacuum With Soft Brush, Passes EN15102 Class B-S1, Do, Eco / Environment Plus