

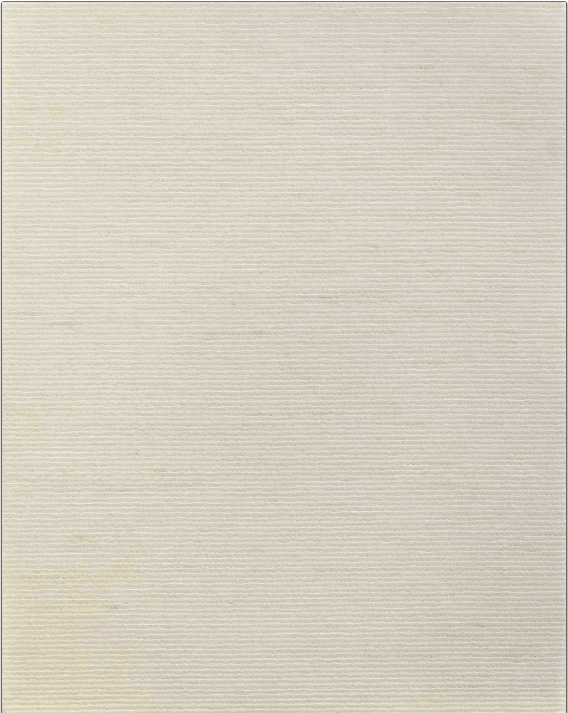
Wallcovering Product Details

PATTERN Noor Plain WC
COLOR 502

BRAND S. Harris
APPLICATION Wallcovering

CATEGORIES ASTM-E84, En 15102, String / Textile, Linen
COLORS Beige

DESIGN TYPES Novelty, Solid, Texture Plain, Contemporary / Modern



WIDTH	VERTICAL REPEAT	HORIZONTAL REPEAT	CONTENT
43.00 in (109.22 cm)	0.00 in (0.00 cm)	0.00 in (0.00 cm)	Face: 58% Linen, 42% Silk, Backing: 70% Wood Pulp, 30% Recycled Polyester
BACKING	FIRE CODES	PRODUCT NUMBER	COUNTRY
Strippable, Pretrimmed	Ce Mark Certified, Passes ASTM E-84 Class A Or 1, Passes EN15102 Class B-S1, Do	2005502	Netherlands

ADDITIONAL PRODUCT NOTES
 Soil & Stain Repellent Finish, Pfas-Free, Strippable, Pretrimmed, Paste The Wall, Fsc Certified, Ce Mark Certified, Random Match, Gently Vacuum With Soft Brush, Passes EN15102 Class B-S1, Do, Eco / Environment Plus