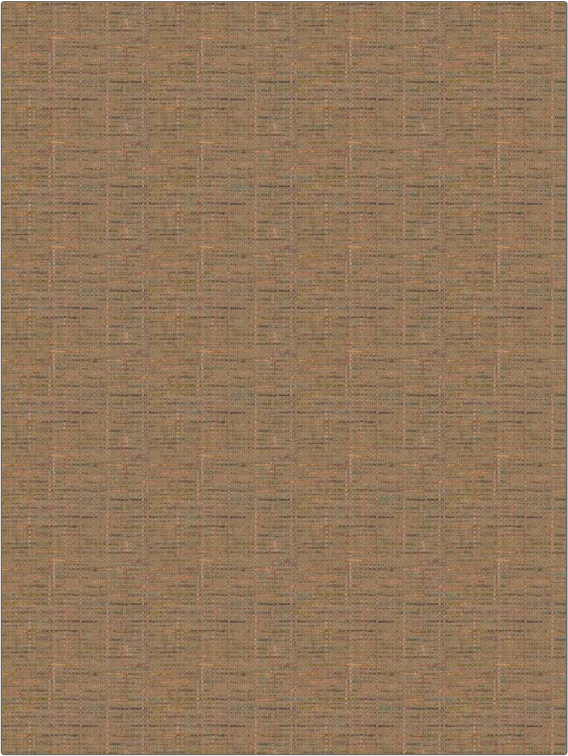


Fabric Product Details

PATTERN Atlas Weave
COLOR Lotus

BRAND	APPLICATION
S. Harris	Fabric
USES	CATEGORIES
Bedding, Drapery, Multipurpose	Wovens, Chenille
BOOK	COLORS
Elements	Metallic, Gold, Pink, Multi-Color
DESIGN TYPES	SCALE
Check / Plaid, Texture Plain, Contemporary / Modern	Small
DIRECTION SHOWN	
Up the Bolt	



WIDTH	VERTICAL REPEAT	HORIZONTAL REPEAT	CONTENT
54.00 in (137.16 cm)	5.00 in (12.70 cm)	7.12 in (18.08 cm)	78% Viscose, 10% Polyester, 6% Linen, 6% Cotton
BACKING	FIRE CODES	DOUBLE RUBS	PRODUCT NUMBER
	UFAC Class I / NFPA 260	Exceeds 42,000 Double Rubs (Wyzenbeek Method)	2118003
DATE BOOKED	COUNTRY	CLEANING CODES	
01/2020	Italy	S	

ADDITIONAL PRODUCT NOTES

Passes 15,000 Martindale Tst, In Compliance With Ca Prop 65, Ca Tb 117-2013, Exclusive Pattern