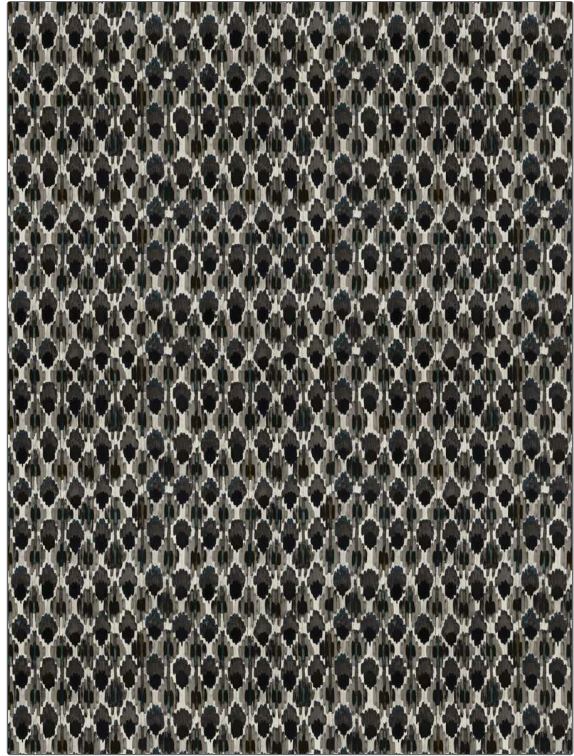


# Fabric Product Details

<b>PATTERN</b>	<b>Pasture Raised</b>
<b>COLOR</b>	<b>Midnight</b>
<b>BRAND</b>	<b>APPLICATION</b>
<b>S. Harris</b>	<b>Fabric</b>
<b>USES</b>	<b>CATEGORIES</b>
<b>Bedding, Drapery, Multipurpose</b>	<b>Velvet / Grospoint, Prints</b>
<b>BOOK</b>	<b>COLORS</b>
<b>Paradigm</b>	<b>Grey, Blue, Brown</b>
<b>DESIGN TYPES</b>	<b>SCALE</b>
<b>Global / Ethnic, Print Pattern, Contemporary / Modern, Abstract</b>	<b>Medium</b>
<b>DIRECTION SHOWN</b>	
<b>Up the Bolt</b>	



<b>WIDTH</b>	<b>VERTICAL REPEAT</b>	<b>HORIZONTAL REPEAT</b>	<b>CONTENT</b>
<b>54.00 in (137.16 cm)</b>	<b>26.37 in (66.98 cm)</b>	<b>18.00 in (45.72 cm)</b>	<b>88% Cotton, 12% Polyester</b>
<b>BACKING</b>	<b>FIRE CODES</b>	<b>DOUBLE RUBS</b>	<b>PRODUCT NUMBER</b>
	<b>UFAC Class I / NFPA 260</b>	<b>Exceeds 39,000 Double Rubs (Wyzenbeek Method)</b>	<b>2126702</b>
<b>DATE BOOKED</b>	<b>COUNTRY</b>	<b>CLEANING CODES</b>	
<b>03/2024</b>	<b>Austria</b>	<b>P</b>	

<b>ADDITIONAL PRODUCT NOTES</b>
<b>Passes 35,000 Martindale Tst, Ca Tb 117-2013, Mirrored Velvet, Exclusive Pattern</b>