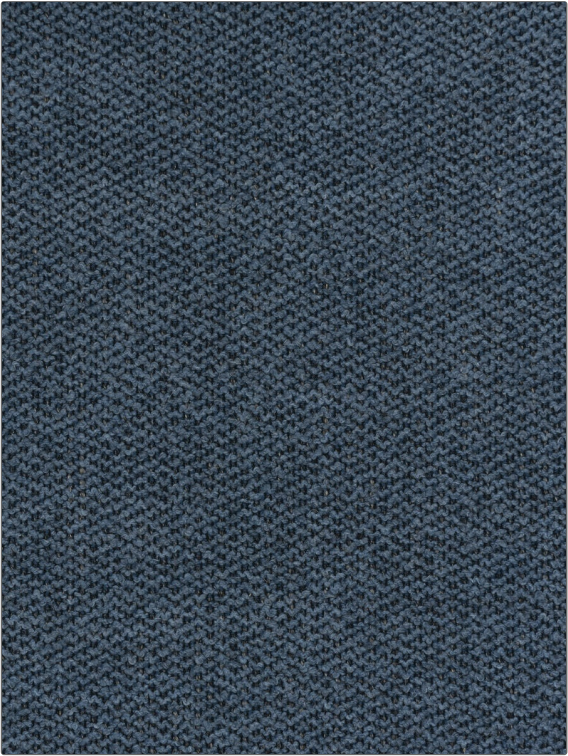


Fabric Product Details

PATTERN	Fully Present
COLOR	Whole Blue

BRAND	APPLICATION
S. Harris	Fabric
USES	CATEGORIES
Multipurpose	Wool, Wovens
BOOK	COLORS
Elements	Blue
DESIGN TYPES	RAILROADED
Texture Plain, Contemporary / Modern	Not Railroaded



WIDTH	VERTICAL REPEAT	HORIZONTAL REPEAT	CONTENT
54.00 in (137.16 cm)	0.00 in (0.00 cm)	0.00 in (0.00 cm)	34% Acrylic, 24% Cotton, 14% Wool, 12% Viscose, 12% Polyester, 4% Linen
BACKING	FIRE CODES	DOUBLE RUBS	PRODUCT NUMBER
Light Acrylic Backing	UFAC Class I / NFPA 260	Exceeds 65,000 Double Rubs (Wyzenbeek Method)	3003703
DATE BOOKED	COUNTRY	CLEANING CODES	
01/2020	Italy	S	

ADDITIONAL PRODUCT NOTES
Ca Tb 117-2013, Light Acrylic Backing, Exclusive Pattern