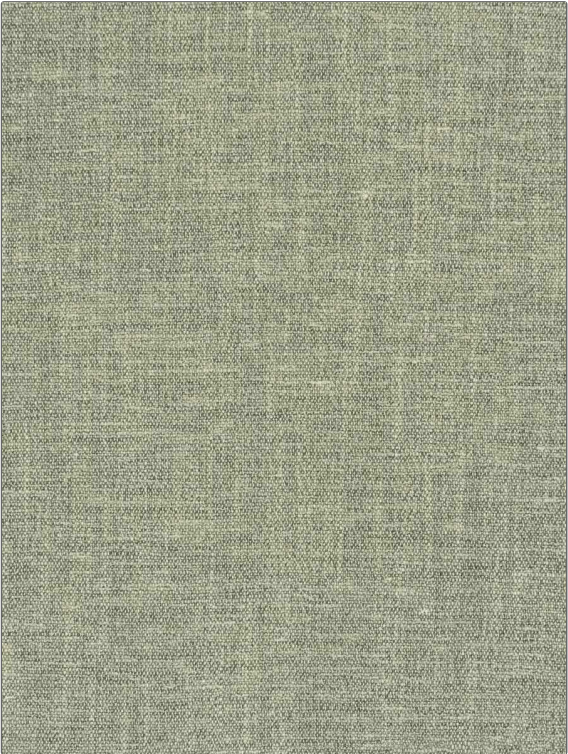


# Fabric Product Details

**PATTERN** Nest Linen  
**COLOR** Green Tea

<b>BRAND</b>	<b>APPLICATION</b>
S. Harris	Fabric
<b>USES</b>	<b>CATEGORIES</b>
Bedding, Multipurpose	Wool, Wovens, Solids / Small Scale Patterns, Linen
<b>BOOK</b>	<b>COLORS</b>
Elements	Light Green
<b>DESIGN TYPES</b>	<b>DIRECTION SHOWN</b>
Solid, Texture Plain, Contemporary / Modern	Up the Bolt



<b>WIDTH</b>	<b>VERTICAL REPEAT</b>	<b>HORIZONTAL REPEAT</b>	<b>CONTENT</b>
55.00 in (139.70 cm)	0.00 in (0.00 cm)	0.00 in (0.00 cm)	40% Linen, 36% Viscose, 16% Wool, 8% Polyester
<b>BACKING</b>	<b>FIRE CODES</b>	<b>DOUBLE RUBS</b>	<b>PRODUCT NUMBER</b>
	UFAC Class I / NFPA 260	Exceeds 21,500 Double Rubs (Wyzenbeek Method)	4178305
<b>DATE BOOKED</b>	<b>COUNTRY</b>	<b>CLEANING CODES</b>	
01/2020	Italy	S	

**ADDITIONAL PRODUCT NOTES**

Ca Tb 117-2013