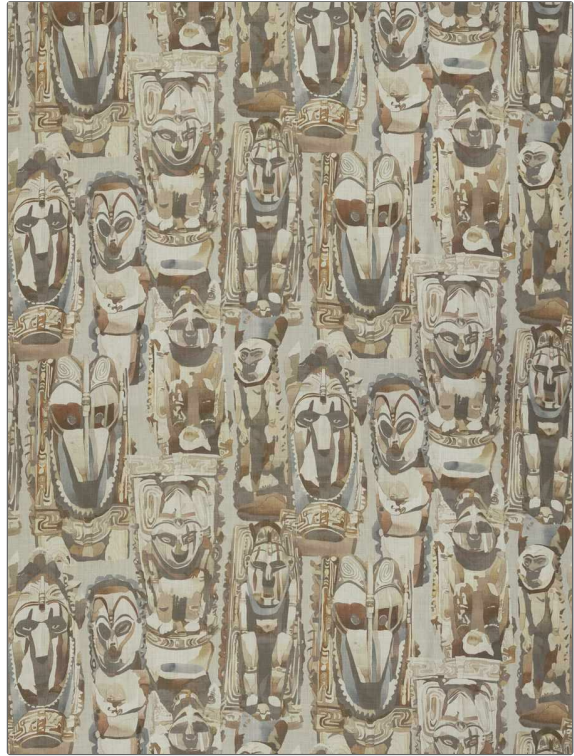


# Fabric Product Details

**PATTERN** Moko  
**COLOR** Nanua

<b>BRAND</b>	<b>APPLICATION</b>
S. Harris	Fabric
<b>USES</b>	<b>CATEGORIES</b>
Bedding, Drapery, Multipurpose, Upholstery	Prints, Linen
<b>BOOK</b>	<b>COLORS</b>
Orejen	Black, Grey, Brown, Beige, Taupe / Tan, Linen
<b>DESIGN TYPES</b>	<b>SCALE</b>
Global / Ethnic, Novelty, Print Pattern, Contemporary / Modern	Large
<b>RAILROADED</b>	
Not Railroaded	



<b>WIDTH</b>	<b>VERTICAL REPEAT</b>	<b>HORIZONTAL REPEAT</b>	<b>CONTENT</b>
59.00 in (149.86 cm)	42.50 in (107.95 cm)	29.10 in (73.91 cm)	100% Linen
<b>BACKING</b>	<b>FIRE CODES</b>	<b>DOUBLE RUBS</b>	<b>PRODUCT NUMBER</b>
	UFAC Class I / NFPA 260	Exceeds 18,000 Double Rubs	4314303
<b>DATE BOOKED</b>	<b>COUNTRY</b>	<b>CLEANING CODES</b>	
02/2021	Austria	S	

**ADDITIONAL PRODUCT NOTES**  
 Passes 18,000 Martindale Tst, Refer To Image Under Sample., Ca Tb 117-2013, Exclusive Pattern