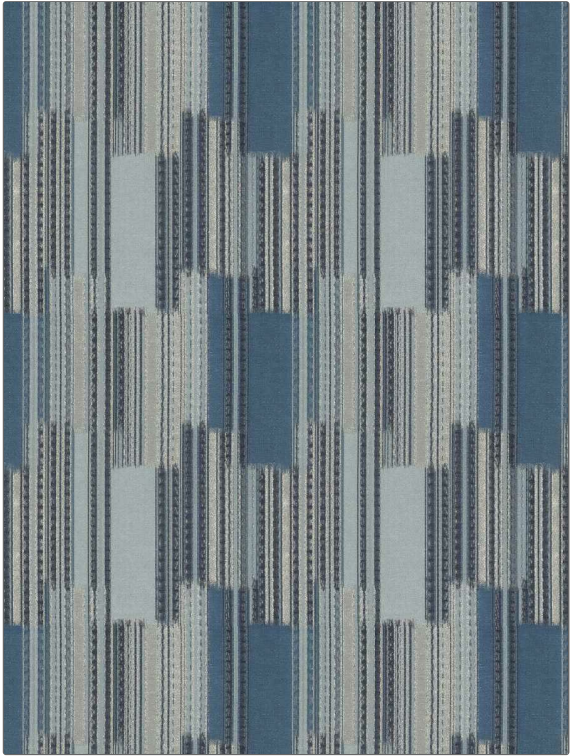


# Fabric Product Details

**PATTERN** Chatai  
**COLOR** Lake

<b>BRAND</b>	<b>APPLICATION</b>
S. Harris	Fabric
<b>USES</b>	<b>CATEGORIES</b>
Bedding, Drapery, Multipurpose	Wovens
<b>BOOK</b>	<b>COLORS</b>
Orejen	Blue, Light Blue
<b>DESIGN TYPES</b>	<b>SCALE</b>
Global / Ethnic, Contemporary / Modern	Medium
<b>DIRECTION SHOWN</b>	
Up the Bolt	



<b>WIDTH</b>	<b>VERTICAL REPEAT</b>	<b>HORIZONTAL REPEAT</b>	<b>CONTENT</b>
54.00 in (137.16 cm)	14.00 in (35.56 cm)	12.90 in (32.77 cm)	82% Polyester, 18% Zari
<b>BACKING</b>	<b>FIRE CODES</b>	<b>DOUBLE RUBS</b>	<b>PRODUCT NUMBER</b>
	UFAC Class I / NFPA 260	Exceeds 35,000 Double Rubs (Wyzenbeek Method)	4314902
<b>DATE BOOKED</b>	<b>COUNTRY</b>	<b>CLEANING CODES</b>	
02/2021	India	S	

**ADDITIONAL PRODUCT NOTES**  
Ca Tb 117-2013, Exclusive Pattern