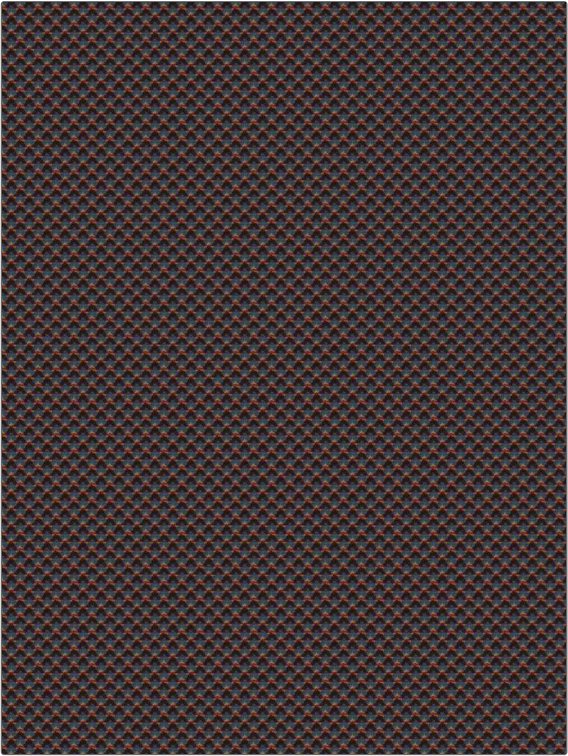


Fabric Product Details

PATTERN Sontag
COLOR Berry Jewel

BRAND	APPLICATION
S. Harris	Fabric
USES	CATEGORIES
Upholstery	Wovens
BOOK	COLORS
Design En Rogue Artistry	Blue, Gold, Burgundy
DESIGN TYPES	SCALE
Geometric, Small Scale Woven, Contemporary / Modern	Small
DIRECTION SHOWN	
Up the Bolt	



WIDTH	VERTICAL REPEAT	HORIZONTAL REPEAT	CONTENT
55.00 in (139.70 cm)	0.85 in (2.16 cm)	0.86 in (2.18 cm)	39% Viscose, 25% Acrylic, 18% Polyester, 14% Cotton, 4% Linen
BACKING	FIRE CODES	DOUBLE RUBS	PRODUCT NUMBER
	UFAC Class I / NFPA 260	Exceeds 100,000 Double Rubs (Wyzenbeek Method)	6348701
DATE BOOKED	COUNTRY	CLEANING CODES	
06/2021	Italy	S	

ADDITIONAL PRODUCT NOTES

Ca Tb 117-2013, Exclusive Pattern