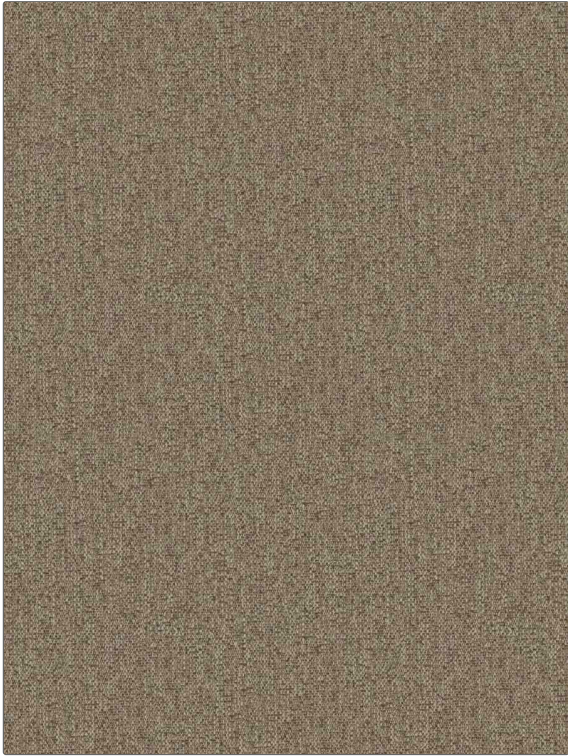


# Fabric Product Details

**PATTERN** Corleone  
**COLOR** Brando Putty

<b>BRAND</b>	<b>APPLICATION</b>
S. Harris	Fabric
<b>USES</b>	<b>CATEGORIES</b>
Bedding, Multipurpose, Upholstery	Wovens, Solids / Small Scale Patterns
<b>BOOK</b>	<b>COLORS</b>
Elements By Diane Keaton	Off White / Ivory
<b>DESIGN TYPES</b>	<b>DIRECTION SHOWN</b>
Small Scale Woven, Texture Plain	Up the Bolt



<b>WIDTH</b>	<b>VERTICAL REPEAT</b>	<b>HORIZONTAL REPEAT</b>	<b>CONTENT</b>
54.00 in (137.16 cm)	0.00 in (0.00 cm)	0.00 in (0.00 cm)	40% Cotton, 30% Acrylic, 20% Polyester, 10% Linen
<b>BACKING</b>	<b>FIRE CODES</b>	<b>DOUBLE RUBS</b>	<b>PRODUCT NUMBER</b>
	UFAC Class I / NFPA 260	Exceeds 30,000 Double Rubs (Wyzenbeek Method)	7531603
<b>DATE BOOKED</b>	<b>COUNTRY</b>	<b>CLEANING CODES</b>	
11/2021	Turkey	S	

**ADDITIONAL PRODUCT NOTES**

Ca Tb 117-2013, Exclusive Pattern