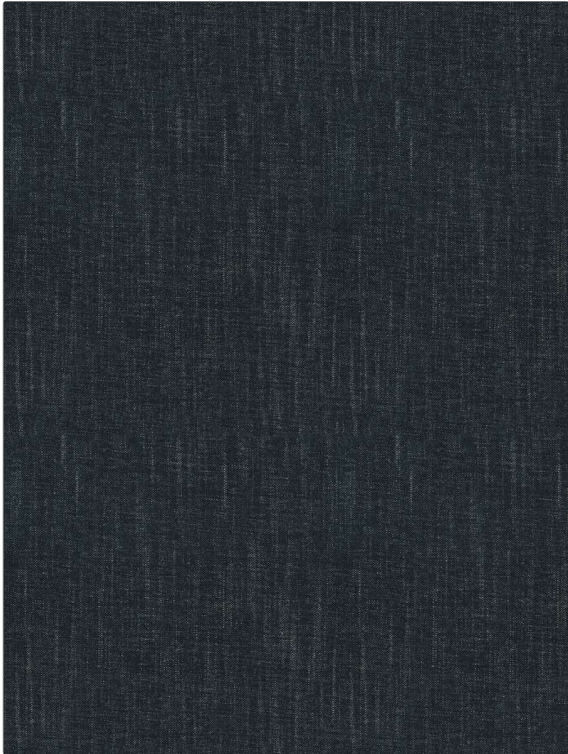


Fabric Product Details

PATTERN	KB Surma
COLOR	Nautica

BRAND	APPLICATION
S. Harris	Fabric
USES	CATEGORIES
Upholstery	Easy To Clean, Wovens, Solids / Small Scale Patterns, Chenille
BOOK	COLORS
Elements Binder Knit Backed Swatch Card	Blue
DESIGN TYPES	DIRECTION SHOWN
Solid, Contemporary / Modern	Up the Bolt



WIDTH	FINISH	VERTICAL REPEAT	HORIZONTAL REPEAT
54.00 in (137.16 cm)	Alta Performance	0.00 in (0.00 cm)	0.00 in (0.00 cm)
CONTENT	BACKING	FIRE CODES	DOUBLE RUBS
67% Viscose, 19% Linen, 8% Polyester, 6% Cotton	Knit Backed	UFAC Class I / NFPA 260	Exceeds 100,000 Double Rubs (Wyzenbeek Method)
PRODUCT NUMBER	DATE BOOKED	COUNTRY	CLEANING CODES
0854204	11/2023	Italy	WS

ADDITIONAL PRODUCT NOTES
Pfas-Free, Alta Performance, Easy To Clean Finish, Ca Tb 117-2013, Knit Backed, Exclusive Pattern