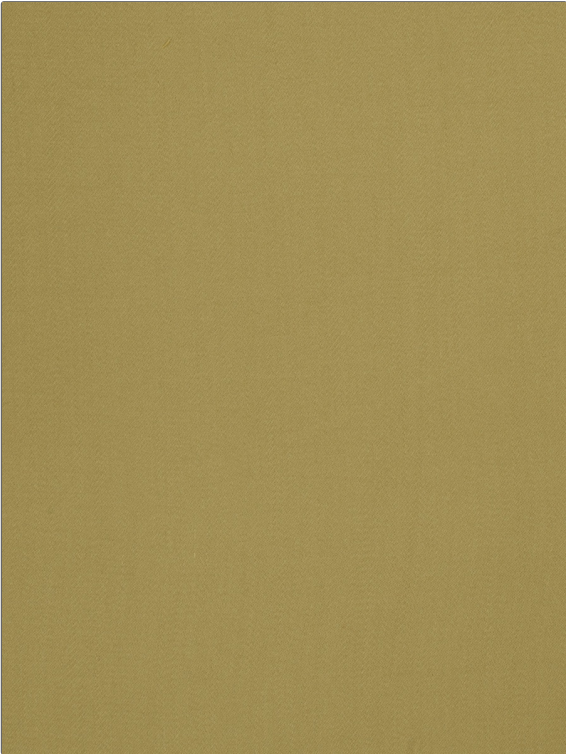


Fabric Product Details

PATTERN Wool Satin
COLOR Kiwi



BRAND	APPLICATION
S. Harris	Fabric
USES	CATEGORIES
Drapery, Upholstery	Wool, Wovens
BOOK	COLORS
Elements	Green
DESIGN TYPES	DIRECTION SHOWN
Solid	Up the Bolt

WIDTH	VERTICAL REPEAT	HORIZONTAL REPEAT	CONTENT
54.00 in (137.16 cm)	0.00 in (0.00 cm)	0.00 in (0.00 cm)	100% Wool
BACKING	FIRE CODES	DOUBLE RUBS	PRODUCT NUMBER
	UFAC Class I, Passes NFPA 260	Exceeds 102,000 Double Rubs (Wyzenbeek Method)	8572202
DATE BOOKED	COUNTRY	CLEANING CODES	
01/2020	Brazil	S	

ADDITIONAL PRODUCT NOTES

Ca Tb 117-2013