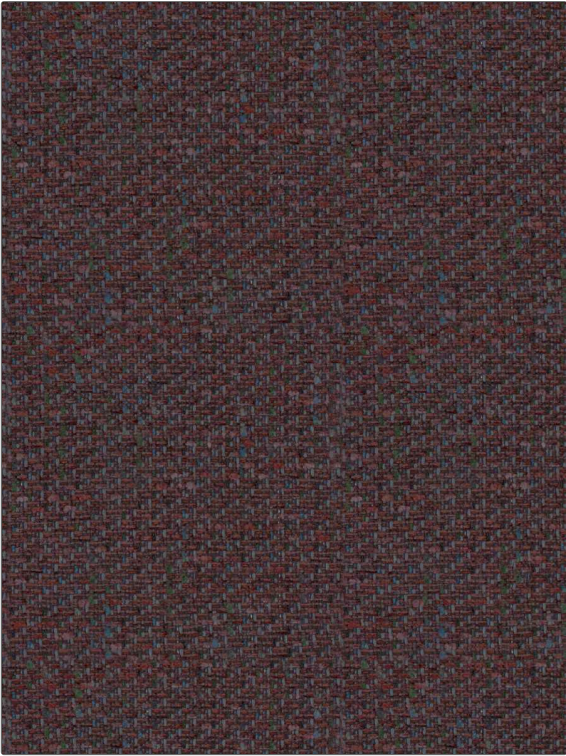


Fabric Product Details

| | |
|---------|---------------|
| PATTERN | Clout Texture |
| COLOR | Rosso |

| | |
|---|-----------------------------|
| BRAND | APPLICATION |
| S. Harris | Fabric |
| USES | CATEGORIES |
| Upholstery | Wovens |
| COLLECTION | COLORS |
| Design En Rogue | Pink, Burgundy, Multi-Color |
| DESIGN TYPES | DIRECTION SHOWN |
| Small Scale Woven, Texture Plain, Contemporary / Modern | Up the Bolt |



| | | | |
|-----------------------------|-------------------------|---|--|
| WIDTH | VERTICAL REPEAT | HORIZONTAL REPEAT | CONTENT |
| 54.00 in (137.16 cm) | 0.00 in (0.00 cm) | 0.00 in (0.00 cm) | 48% Cotton, 25% Viscose, 9% Nylon, 8% Wool, 7% Polyester, 3% Acrylic |
| BACKING | FIRE CODES | DOUBLE RUBS | PRODUCT NUMBER |
| Knit Backing Is Recommended | UFAC Class I / NFPA 260 | Exceeds 36,000 Double Rubs (Wyzenbeek Method) | 9492702 |
| COUNTRY | CLEANING CODES | | |
| Italy | S | | |

| |
|--|
| ADDITIONAL PRODUCT NOTES |
| Exclusive Pattern, Knit Backing Is Recommended |