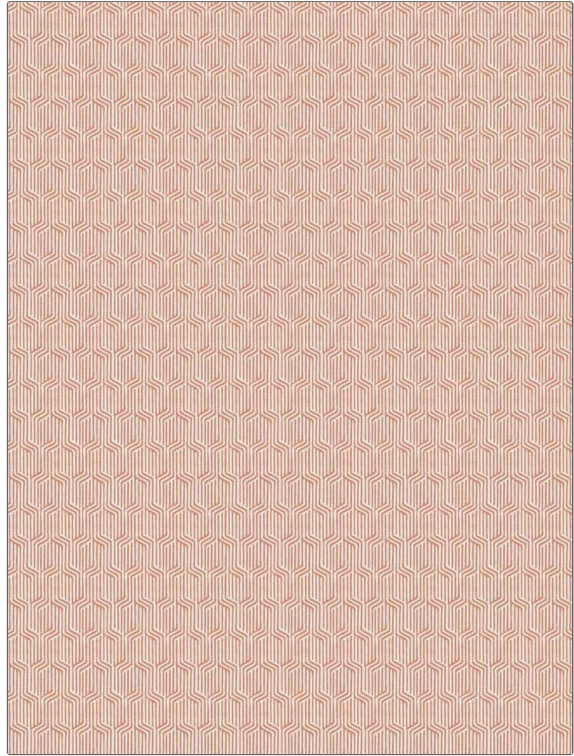


Fabric Product Details

PATTERN Minka
COLOR Starfish

| | |
|---|---------------------------------|
| BRAND | APPLICATION |
| Stroheim | Fabric |
| USES | CATEGORIES |
| Bedding, Drapery, Multipurpose, Upholstery | Handprint, Prints, Linen |
| BOOK | COLORS |
| Color Vol. II Starfish / Hibiscus | Coral / Peach |
| DESIGN TYPES | SCALE |
| Geometric, Global / Ethnic, Print Pattern, Contemporary / Modern | Small |
| DIRECTION SHOWN | |
| Up the Bolt | |



| | | | |
|-----------------------------|--------------------------------|--|-----------------------|
| WIDTH | VERTICAL REPEAT | HORIZONTAL REPEAT | CONTENT |
| 54.00 in (137.16 cm) | 3.00 in (7.62 cm) | 2.00 in (5.08 cm) | 100% Linen |
| BACKING | FIRE CODES | DOUBLE RUBS | PRODUCT NUMBER |
| | UFAC Class I / NFPA 260 | Exceeds 36,000 Double Rubs (Wyzenbeek Method) | 1322903 |
| DATE BOOKED | COUNTRY | CLEANING CODES | |
| 05/2023 | India | S | |

ADDITIONAL PRODUCT NOTES

Ca Tb 117-2013, Exclusive Pattern