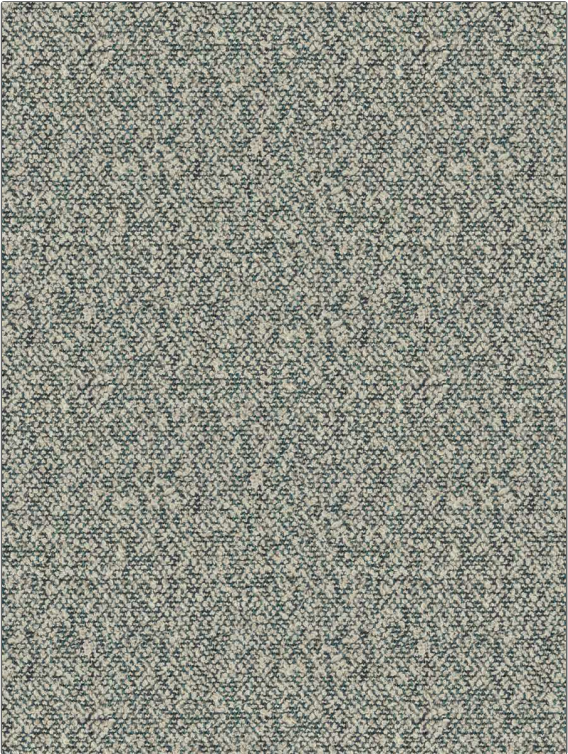


# Fabric Product Details

**PATTERN** Nellie  
**COLOR** Oceanside

<b>BRAND</b>	<b>APPLICATION</b>
<b>Stroheim</b>	<b>Fabric</b>
<b>USES</b>	<b>CATEGORIES</b>
<b>Upholstery</b>	<b>Wovens</b>
<b>BOOK</b>	<b>COLORS</b>
<b>Color Vol. II Oceanside / Tahiti</b>	<b>Blue, Light Blue</b>
<b>DESIGN TYPES</b>	<b>SCALE</b>
<b>Small Scale Woven, Texture Plain</b>	<b>Small</b>
<b>DIRECTION SHOWN</b>	
<b>Up the Bolt</b>	



<b>WIDTH</b>	<b>VERTICAL REPEAT</b>	<b>HORIZONTAL REPEAT</b>	<b>CONTENT</b>
<b>53.00 in (134.62 cm)</b>	<b>0.00 in (0.00 cm)</b>	<b>0.00 in (0.00 cm)</b>	<b>63% Acrylic, 22% Polyester, 10% Cotton, 5% Linen</b>
<b>BACKING</b>	<b>FIRE CODES</b>	<b>DOUBLE RUBS</b>	<b>PRODUCT NUMBER</b>
	<b>UFAC Class I / NFPA 260</b>	<b>Exceeds 27,000 Double Rubs (Wyzenbeek Method)</b>	<b>1323403</b>
<b>DATE BOOKED</b>	<b>COUNTRY</b>	<b>CLEANING CODES</b>	
<b>05/2023</b>	<b>Turkey</b>	<b>S</b>	

**ADDITIONAL PRODUCT NOTES**  
**Ca Tb 117-2013, Exclusive Pattern**