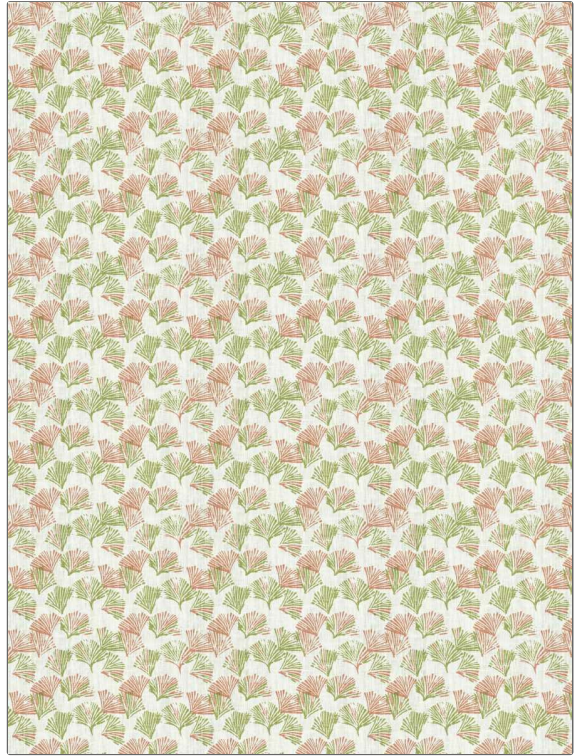


Fabric Product Details

PATTERN	Layne
COLOR	Starfish
BRAND	APPLICATION
Stroheim	Fabric
USES	CATEGORIES
Bedding, Drapery, Multipurpose, Upholstery	Handprint, Prints, Linen
BOOK	COLORS
Color Vol. II Starfish / Hibiscus	Light Green, Coral / Peach
DESIGN TYPES	SCALE
Asian, Leaves, Print Pattern, Tropical / Botanical, Contemporary / Modern	Small
RAILOADED	
Not Railed	



WIDTH	VERTICAL REPEAT	HORIZONTAL REPEAT	CONTENT
54.00 in (137.16 cm)	6.00 in (15.24 cm)	8.50 in (21.59 cm)	100% Linen
BACKING	FIRE CODES	DOUBLE RUBS	PRODUCT NUMBER
	UFAC Class I / NFPA 260	Exceeds 36,000 Double Rubs (Wyzenbeek Method)	1323902
DATE BOOKED	COUNTRY	CLEANING CODES	
05/2023	India	S	

ADDITIONAL PRODUCT NOTES
Ca Tb 117-2013, Exclusive Pattern