

Fabric Product Details

PATTERN Abella
COLOR Oceanside

BRAND

Stroheim

APPLICATION

Fabric

USES

**Bedding, Drapery,
Multipurpose, Upholstery**

CATEGORIES

Prints, Linen

BOOK

**Color Vol. II Oceanside /
Tahiti**

COLORS

**Blue, Light Blue, Aqua /
Teal**

DESIGN TYPES

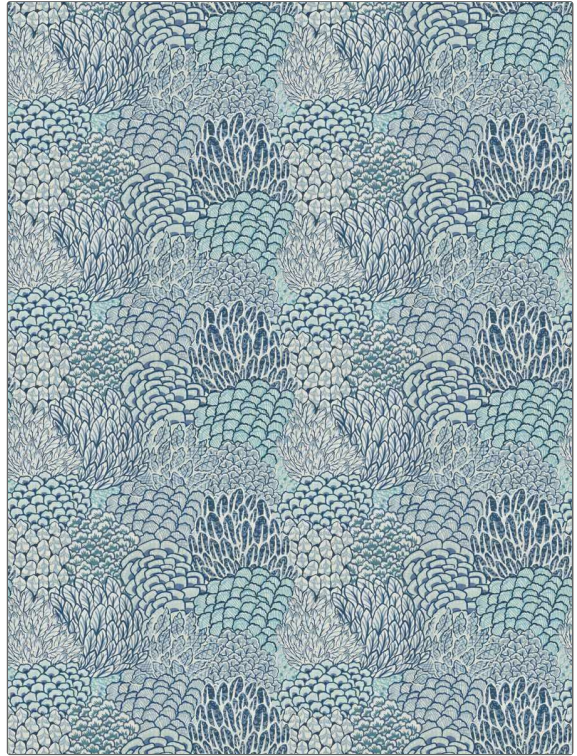
**Leaves, Print Pattern,
Tropical / Botanical,
Contemporary / Modern,
Bargello, Dots / Circles**

SCALE

Large

DIRECTION SHOWN

Up the Bolt



WIDTH

54.00 in (137.16 cm)

VERTICAL REPEAT

27.00 in (68.58 cm)

HORIZONTAL REPEAT

18.00 in (45.72 cm)

CONTENT

100% Linen

BACKING

FIRE CODES

UFAC Class I / NFPA 260

DOUBLE RUBS

**Exceeds 30,000 Double
Rubs (Wyzenbeek Method)**

PRODUCT NUMBER

1338301

DATE BOOKED

05/2023

COUNTRY

China

CLEANING CODES

S

ADDITIONAL PRODUCT NOTES

Ca Tb 117-2013, Exclusive Pattern