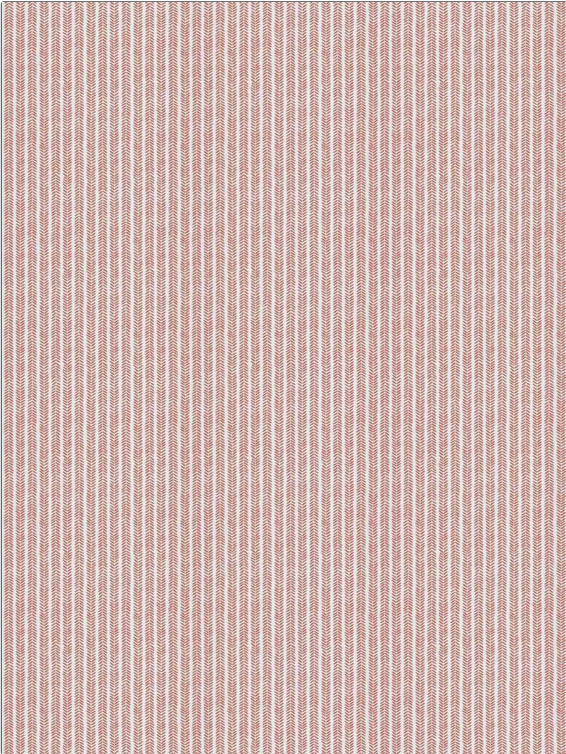


Fabric Product Details

PATTERN Saffi
COLOR Hibiscus

| | |
|---|--|
| BRAND | APPLICATION |
| Stroheim | Fabric |
| USES | CATEGORIES |
| Bedding, Drapery, Multipurpose, Upholstery | Solids / Small Scale Patterns, Prints |
| BOOK | COLORS |
| Color Vol. II Starfish / Hibiscus | Red |
| DESIGN TYPES | SCALE |
| Global / Ethnic, Leaves, Print Pattern, Chevron, Contemporary / Modern | Small |
| DIRECTION SHOWN | |
| Up the Bolt | |



| | | | |
|-----------------------------|--------------------------------|--|------------------------------|
| WIDTH | VERTICAL REPEAT | HORIZONTAL REPEAT | CONTENT |
| 54.00 in (137.16 cm) | 18.00 in (45.72 cm) | 9.00 in (22.86 cm) | 57% Linen, 43% Cotton |
| BACKING | FIRE CODES | DOUBLE RUBS | PRODUCT NUMBER |
| | UFAC Class I / NFPA 260 | Exceeds 32,000 Double Rubs (Wyzenbeek Method) | 1338603 |
| DATE BOOKED | COUNTRY | CLEANING CODES | |
| 05/2023 | China | S | |

ADDITIONAL PRODUCT NOTES
Ca Tb 117-2013, Exclusive Pattern