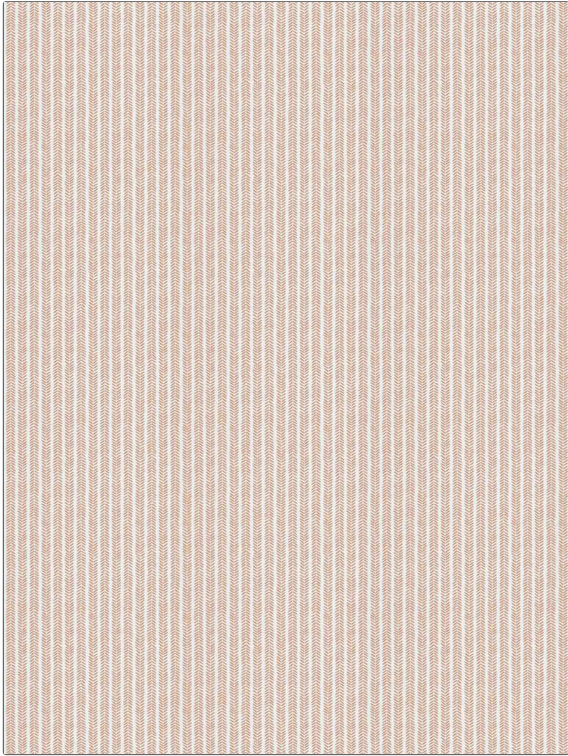


# Fabric Product Details

|   |  |
|---|--|
| <b>PATTERN</b>  | <b>Saffi</b>                                 |
| <b>COLOR</b>  | <b>Starfish</b>                              |
| <b>BRAND</b>  | <b>APPLICATION</b>                           |
| <b>Stroheim</b>   | <b>Fabric</b>                                |
| <b>USES</b>   | <b>CATEGORIES</b>                            |
| <b>Bedding, Drapery, Multipurpose, Upholstery</b>                             | <b>Solids / Small Scale Patterns, Prints</b> |
| <b>BOOK</b>   | <b>COLORS</b>                                |
| <b>Color Vol. II Starfish / Hibiscus</b>                                      | <b>Orange / Spice, Coral / Peach</b>         |
| <b>DESIGN TYPES</b>   | <b>SCALE</b>                                 |
| <b>Global / Ethnic, Leaves, Print Pattern, Chevron, Contemporary / Modern</b> | <b>Small</b>                                 |
| <b>DIRECTION SHOWN</b>  |  |
| <b>Up the Bolt</b>  |  |



|                             |                                |  |                              |
|-----------------------------|--------------------------------|--|------------------------------|
| <b>WIDTH</b>                | <b>VERTICAL REPEAT</b>         | <b>HORIZONTAL REPEAT</b>                             | <b>CONTENT</b>               |
| <b>54.00 in (137.16 cm)</b> | <b>18.00 in (45.72 cm)</b>     | <b>9.00 in (22.86 cm)</b>                            | <b>57% Linen, 43% Cotton</b> |
| <b>BACKING</b>              | <b>FIRE CODES</b>              | <b>DOUBLE RUBS</b>                                   | <b>PRODUCT NUMBER</b>        |
|                             | <b>UFAC Class I / NFPA 260</b> | <b>Exceeds 32,000 Double Rubs (Wyzenbeek Method)</b> | <b>1338604</b>               |
| <b>DATE BOOKED</b>          | <b>COUNTRY</b>                 | <b>CLEANING CODES</b>                                |                              |
| <b>05/2023</b>              | <b>China</b>                   | <b>S</b>   |                              |

|  |
|--|
| <b>ADDITIONAL PRODUCT NOTES</b>          |
| <b>Ca Tb 117-2013, Exclusive Pattern</b> |