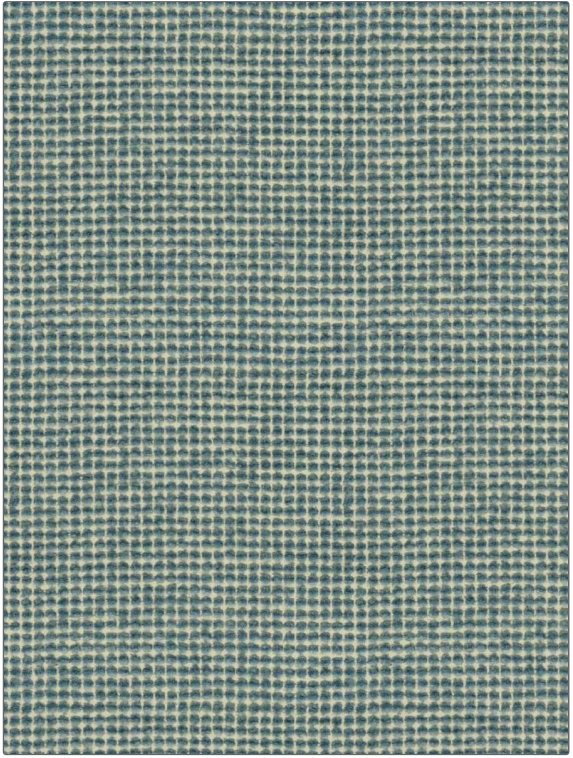


Fabric Product Details

PATTERN	Freya
COLOR	Tahiti
BRAND	APPLICATION
Stroheim	Fabric
USES	CATEGORIES
Upholstery	Wovens, Solids / Small Scale Patterns
BOOK	COLORS
Color Vol. II Oceanside / Tahiti	Aqua / Teal
DESIGN TYPES	SCALE
Small Scale Woven, Contemporary / Modern, Abstract, Dots / Circles	Small
DIRECTION SHOWN	
Up the Bolt	



WIDTH	VERTICAL REPEAT	HORIZONTAL REPEAT	CONTENT
54.00 in (137.16 cm)	0.00 in (0.00 cm)	0.00 in (0.00 cm)	40% Viscose, 30% Cotton, 21% Linen, 9% Polyester
BACKING	FIRE CODES	DOUBLE RUBS	PRODUCT NUMBER
	UFAC Class I / NFPA 260	Exceeds 33,000 Double Rubs (Wyzenbeek Method)	1340202
DATE BOOKED	COUNTRY	CLEANING CODES	
05/2023	Turkey	S	

ADDITIONAL PRODUCT NOTES
Passes 22,000 Martindale Tst, Ca Tb 117-2013, Exclusive Pattern