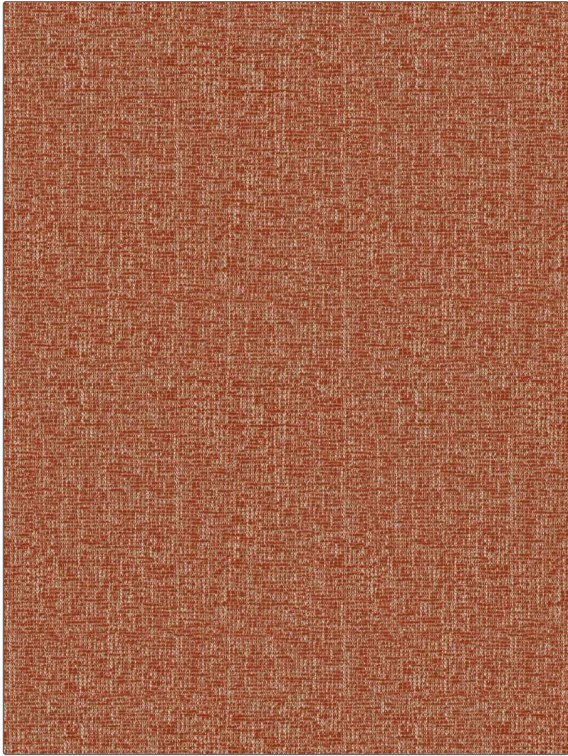


Fabric Product Details

PATTERN Meyer
COLOR Coral Punch

BRAND	APPLICATION
Stroheim	Fabric
USES	CATEGORIES
Upholstery	Bella - Dura, Outdoor, Easy To Clean, Wovens, Solids / Small Scale Patterns
BOOK	COLORS
Color Indoor / Outdoor	Orange / Spice, Coral / Peach
DESIGN TYPES	RAILROADED
Solid, Texture Plain	Not Railroaded



WIDTH	FINISH	VERTICAL REPEAT	HORIZONTAL REPEAT
54.00 in (137.16 cm)	Water Resistant	0.00 in (0.00 cm)	0.00 in (0.00 cm)
CONTENT	BACKING	FIRE CODES	DOUBLE RUBS
79% High UV Polyester, 21% Polyolefin	100% Latex Backing	Does Not Contain FR Chemicals, UFAC Class I / NFPA 260	Exceeds 30,000 Double Rubs (Wyzenbeek Method)
PRODUCT NUMBER	DATE BOOKED	COUNTRY	CLEANING CODES
1375604	05/2023	USA	WS, BLEACH CLEANABLE

ADDITIONAL PRODUCT NOTES

Water Resistant, Soil & Stain Repellent Finish, Pfas-Free, Bella Dura Home, Easy To Clean Finish, 1,000 Hours Light Fastness, Indoor / Outdoor, Ca Tb 117-2013, 100% Latex Backing, Bleach Cleanable, Exclusive Pattern